

WINDOW SCHEDULE					
SYMBOLS	WIDTH	HEIGHT	TYPE	FRAME	SCREEN
1	2'-6 1/8"	1'-8"	HOPPER	WOOD	YES
2	3'-8 1/2"	5'-6"	DOUBLE-HUNG	METAL	NO
3	2'-4"	5'-6"	DOUBLE-HUNG	METAL	NO
4	3'-4"	3'-11"	DOUBLE-HUNG	METAL	NO
5	2'-6"	2'-0"	HOPPER	WOOD	YES

DOOR SCHEDULE					
SYMBOLS	WIDTH	HEIGHT	TYPE	FRAME	SCREEN
A	6'-0"	6'-8"	INTERIOR	2"	METAL
B	3'-0"	6'-8"	INTERIOR	2"	METAL
C	3'-0"	6'-11"	INTERIOR	2"	METAL
D	3'-0"	6'-8"	INTERIOR	2"	METAL
E	3'-0"	6'-11"	INTERIOR	2"	METAL
F	3'-0"	6'-10"	INTERIOR	2"	METAL
G	5'-6"	4'-3"	INTERIOR	2"	METAL
H	5'-7"	6'-9"	EXTERIOR	3"	METAL
I	3'-3"	10'-6"	EXTERIOR	3"	METAL
J	3'-4"	7'-1"	EXTERIOR	3"	METAL
K	3'-4"	6'-11"	EXTERIOR	3"	METAL

CONSULTANTS  
 H:\Con Design\Project 1\Fsc-logo-rgb new.jpg

555 CLAYTON ROAD, CENTRAL ISLIP NY  
 RECREATION CENTER

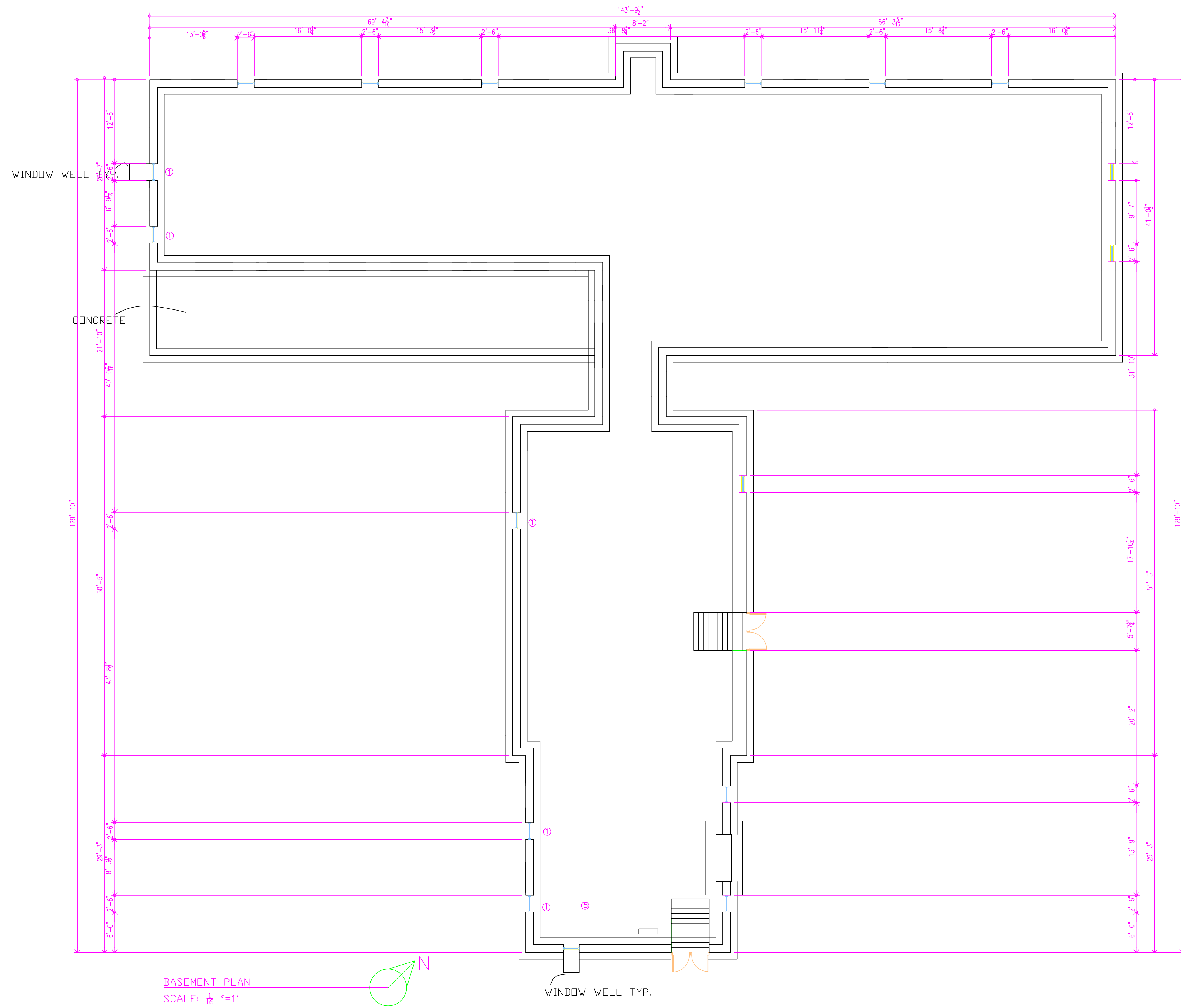
MARK	DATE	DESCRIPTION

PROJECT NO: PROJECT #2  
 CAD DWG FILE:  
 DRAWN BY: SOFIA ABEL, KENIA PERALTA, MEGAN PISCIOTTA, AND RABAB ZIA  
 CHK'D BY:  
 COPYRIGHT:

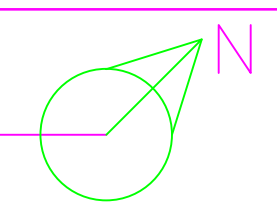
SHEET TITLE  
**EXISTING CONDITION  
 SERVICE LEARNING  
 PROJECT**

A-00  
 SHEET SHEET INDEX OF TOTAL SHEETS

GROUND SNOW LOAD	WIND SPEED (mph)	SEISMIC DESIGN CATEGORY	SUBJECT TO DAMAGE FROM			ICE BARRIER UNDERLAYMENT REQUIRED	FLOOD HAZARDS
			WEATHERING	FRONT LINE DEPT	TERMITE		
20	110	B	SEVERE	3 FT	MOD/HEAVY	YES	YES



BASEMENT PLAN  
SCALE: 1/8" = 1'



CONSULTANTS
H:\Con_Design\Project 1\psc-lago-rgb_new.jpg

OWNER
RECREATION CENTER

555 CLAYTON ROAD, CENTRAL ISLIP NY

MARK	DATE	DESCRIPTION

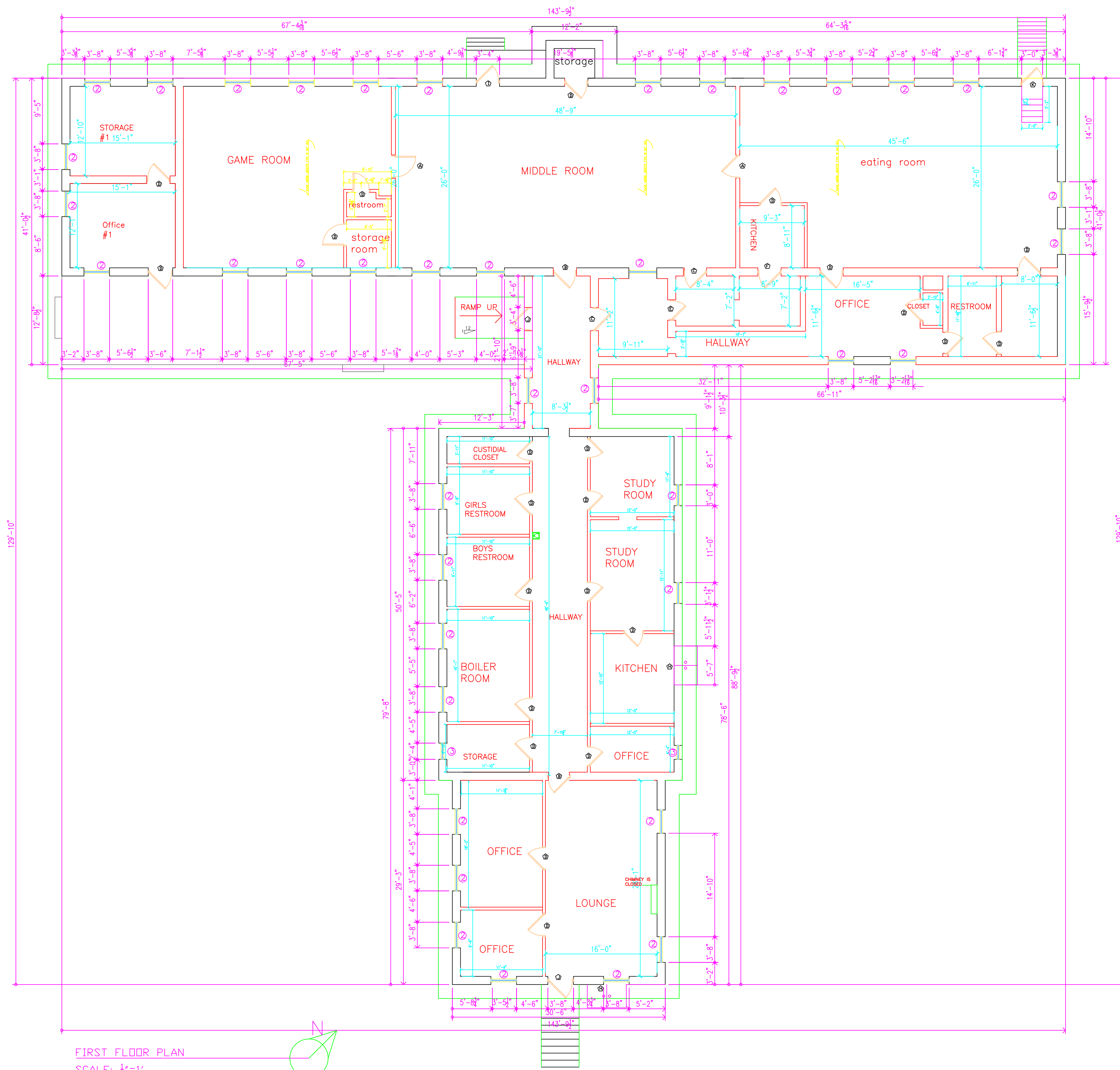
PROJECT NO: PROJECT #2  
 CAD DWG FILE:  
 DRAWN BY: SOFIA ABEL, KENIA PERALTA, MEGAN PISCIOTTA,  
 AND RABAB ZIA  
 CHK'D BY:  
 COPYRIGHT:

SHEET TITLE

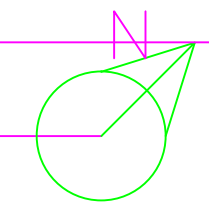
EXISTING CONDITION  
 SERVICE LEARNING  
 PROJECT

A-01

SHEET INDEX OF TOTAL SHEETS



FIRST FLOOR PLAN  
SCALE: 1/8"=1'



CONSULTANTS

H:\Con Design\Project 1\Fsc-lago-rgb new.jpg

555 CLAYTON ROAD, CENTRAL ISLIP NY

OWNER  
RECREATION CENTER

MARK DATE DESCRIPTION

PROJECT NO: PROJECT #2

CAD DWG FILE:  
DRAWN BY: SOFIA ABEL, KENIA PERALTA, MEGAN PISCOTTA,  
AND RABAB ZIA

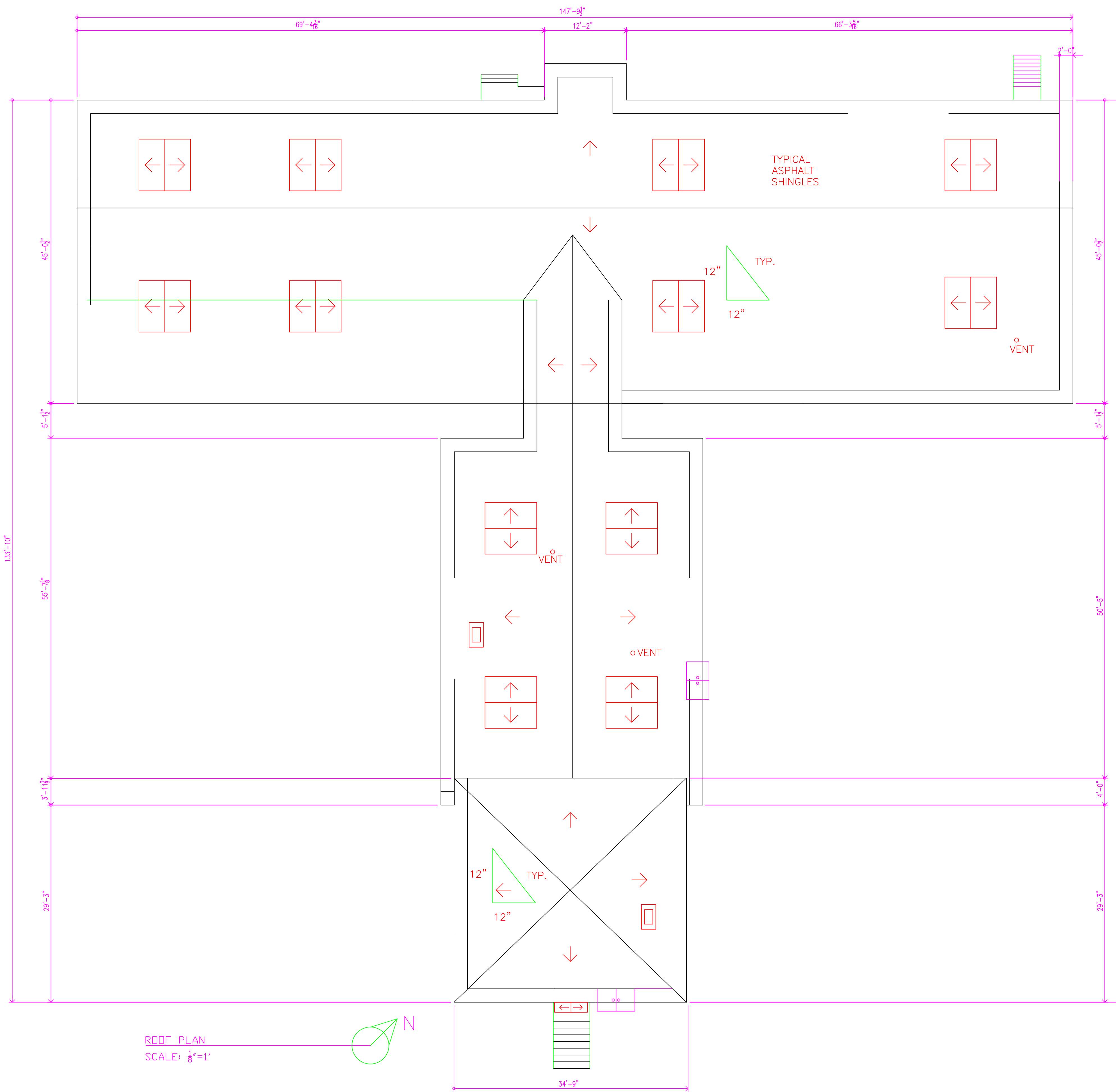
CHK'D BY:  
COPYRIGHT:

SHEET TITLE

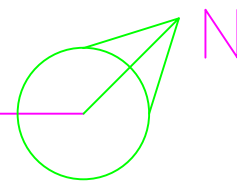
EXISTING CONDITION  
SERVICE LEARNING  
PROJECT

A-02

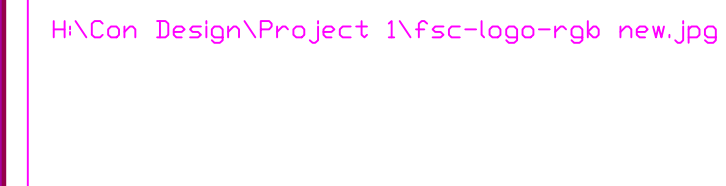
SHEET SHEET INDEX OF TOTAL SHEETS



ROOF PLAN  
SCALE: 1/8"=1'



CONSULTANTS

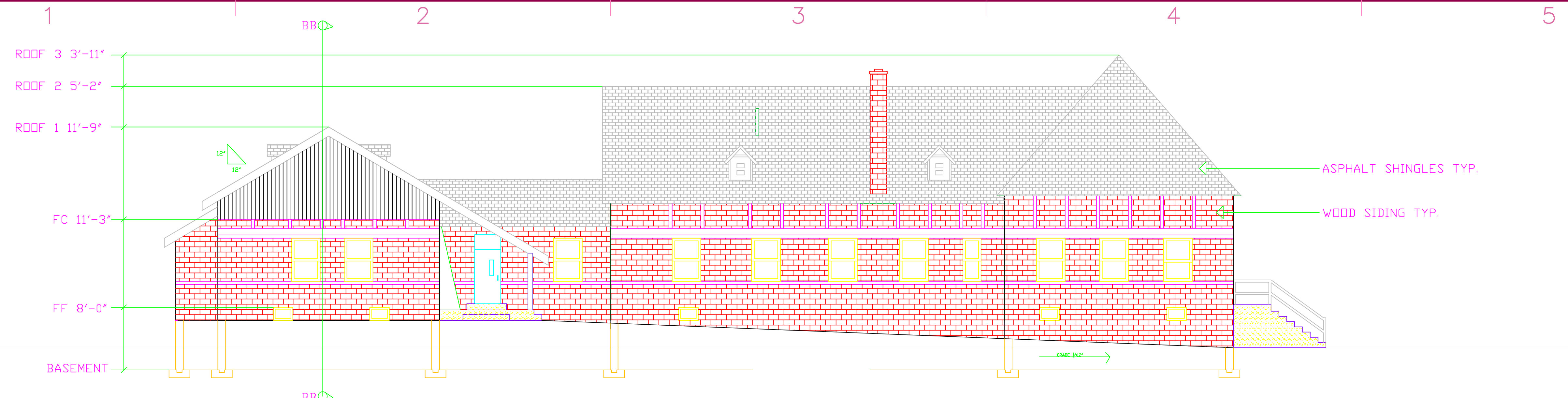


555 CLAYTON ROAD, CENTRAL ISLIP NY  
 OWNER  
 RECREATION CENTER

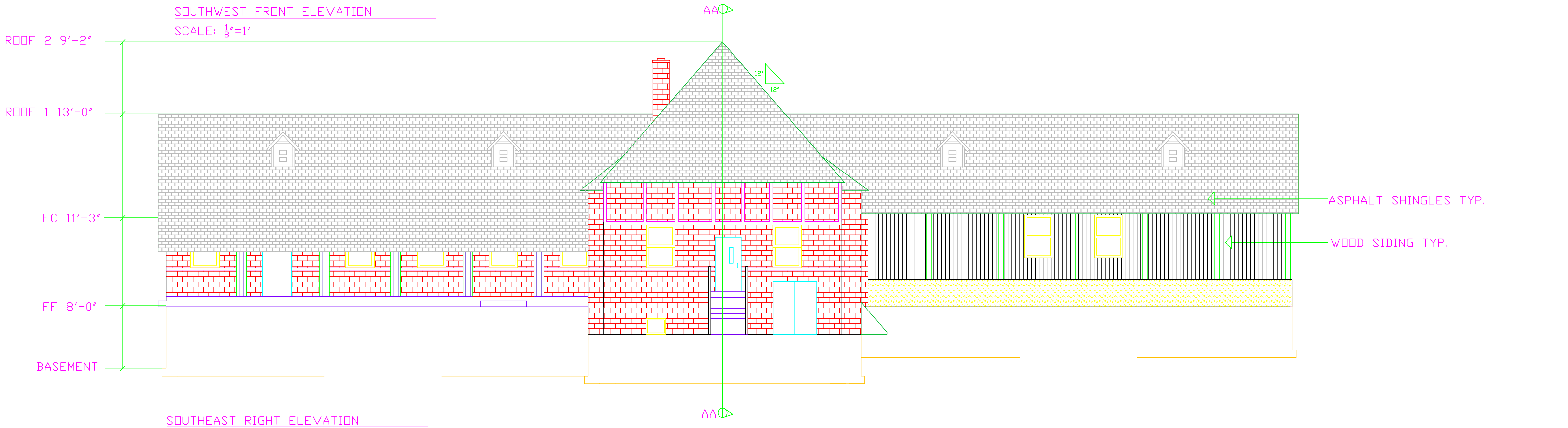
MARK	DATE	DESCRIPTION
PROJECT NO:	PROJECT #2	
CAD DWG FILE:		
DRAWN BY:	SOFIA ABEL, KENIA PERALTA, MEGAN PISCOTTA, AND RABAB ZIA	
CHK'D BY:		
COPYRIGHT:		

SHEET TITLE  
**EXISTING CONDITION  
 SERVICE LEARNING  
 PROJECT**

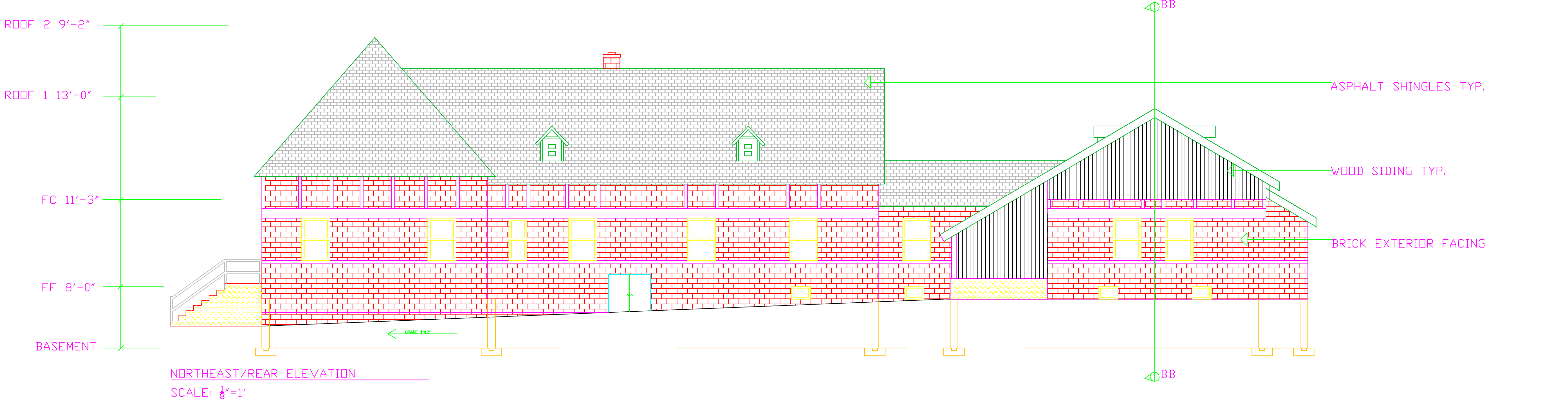
A-03  
 SHEET SHEET INDEX OF TOTAL SHEETS



SOUTHWEST FRONT ELEVATION  
SCALE: 1/8"=1'



SOUTHEAST RIGHT ELEVATION  
SCALE: 1/8"=1'



NORTHEAST/REAR ELEVATION  
SCALE: 1/8"=1'

CONSULTANTS

H:\Con Design\Project 1\Fsc-logo-rgb new.jpg

555 CLAYTON ROAD, CENTRAL ISLIP NY

OWNER RECREATION CENTER

MARK	DATE	DESCRIPTION
		PROJECT #2
PROJECT NO:		
CAD DWG FILE: SOFIA ABEL, KENIA PERALTA, MEGAN PISCIOTTA, AND RABAB ZIA		
DRAWN BY:		
CHK'D BY:		
COPYRIGHT:		

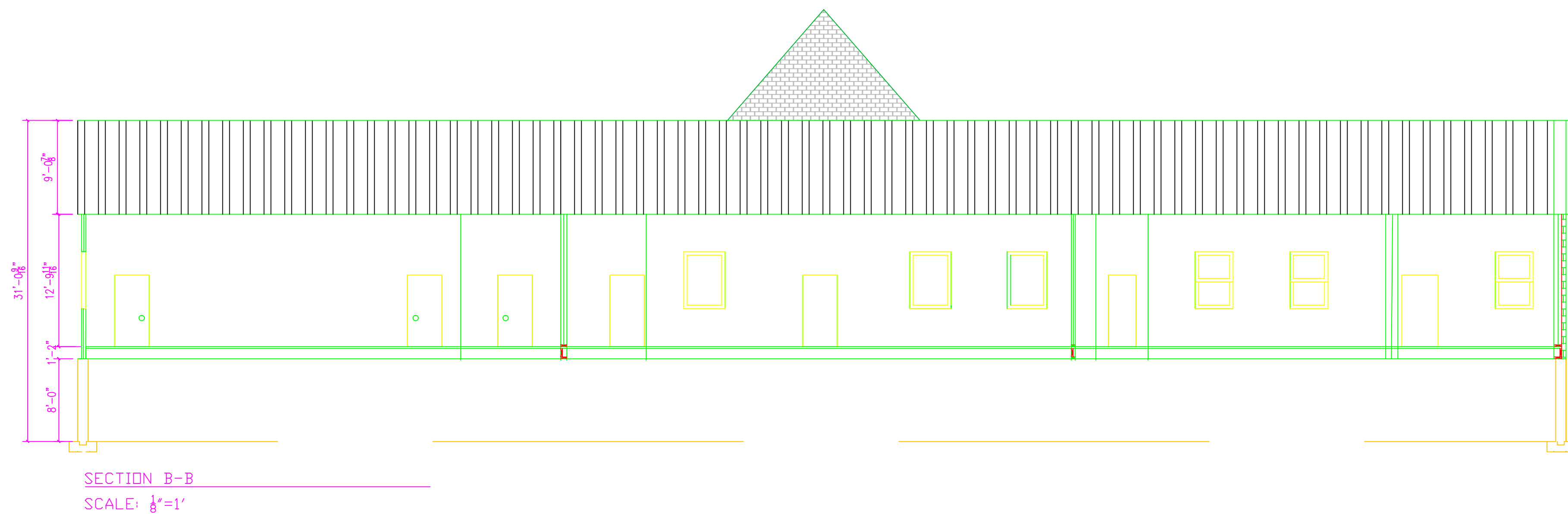
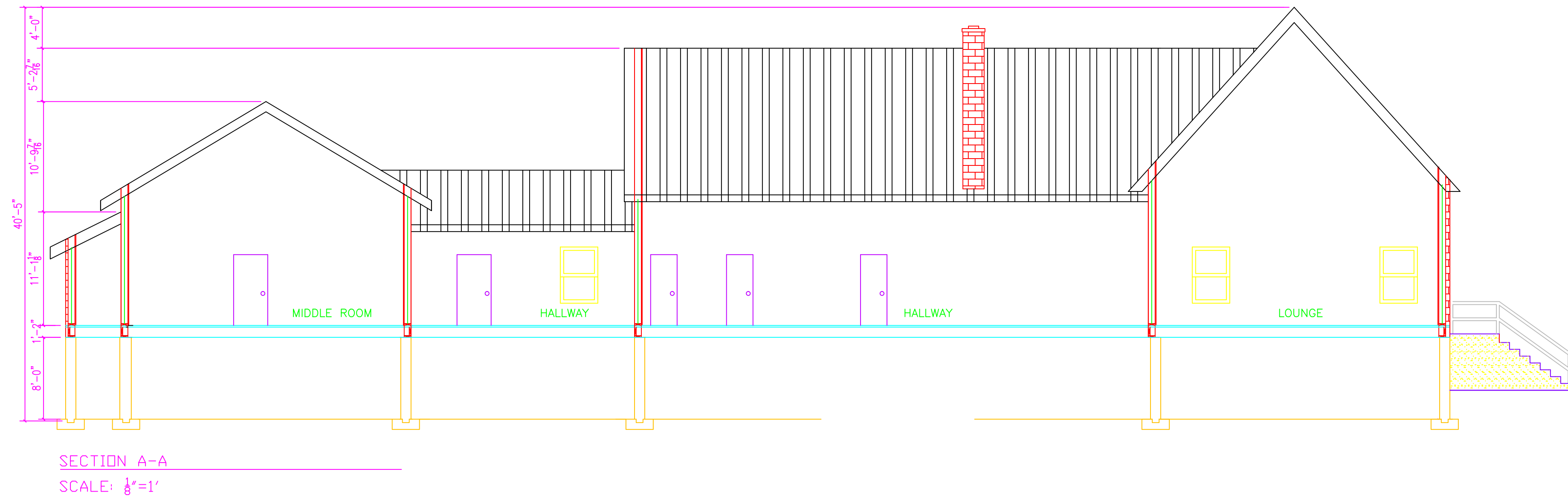
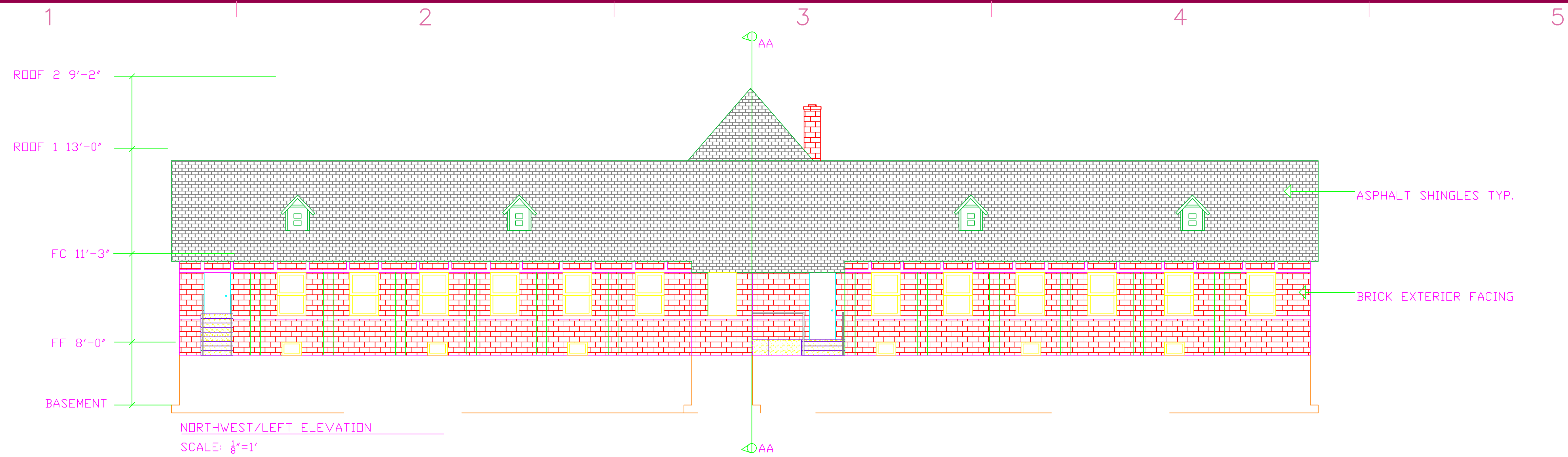
EXISTING CONDITION  
SERVICE LEARNING  
PROJECT

A-04

SHEET INDEX OF TOTAL SHEETS

PRODUCED BY AN AUTODESK EDUCATIONAL PRODUCT

PRODUCED BY AN AUTODESK EDUCATIONAL PRODUCT



CONSULTANTS

H:\Con Design\Project 1\Fsc-logo-rgb new.jpg

555 CLAYTON ROAD, CENTRAL ISLIP NY

OWNER  
RECREATION CENTER

MARK	DATE	DESCRIPTION

PROJECT NO: PROJECT #2

CAD DWG FILE:

DRAWN BY: SOFIA ABEL, KENIA PERALTA, MEGAN PISCOTTI, AND RABAB ZIA

CHK'D BY:

COPYRIGHT:

SHEET TITLE

EXISTING CONDITION  
SERVICE LEARNING  
PROJECT

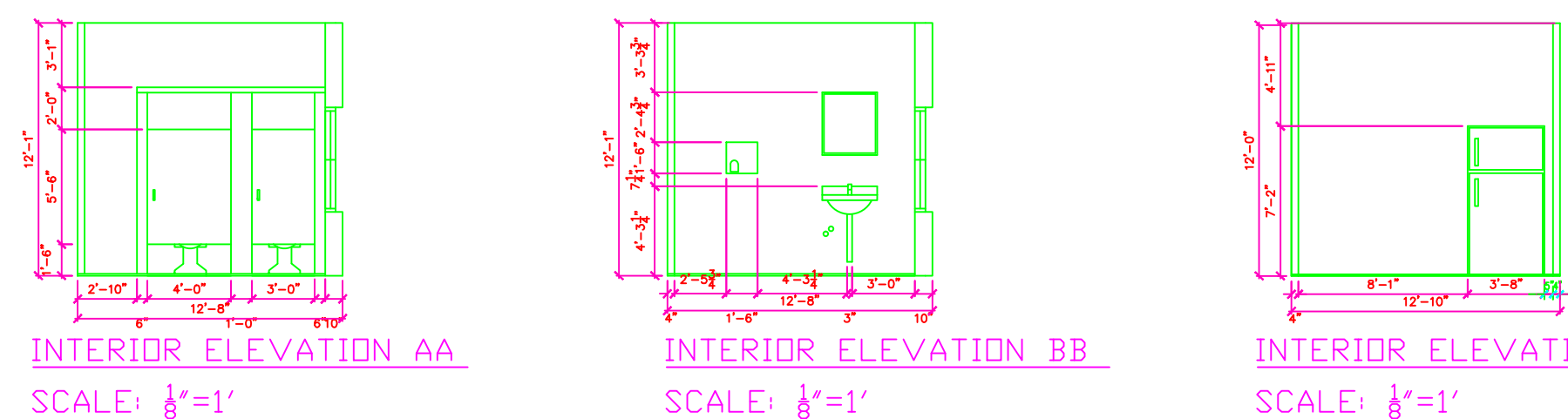
A-05

SHEET SHEET INDEX OF TOTAL SHEETS

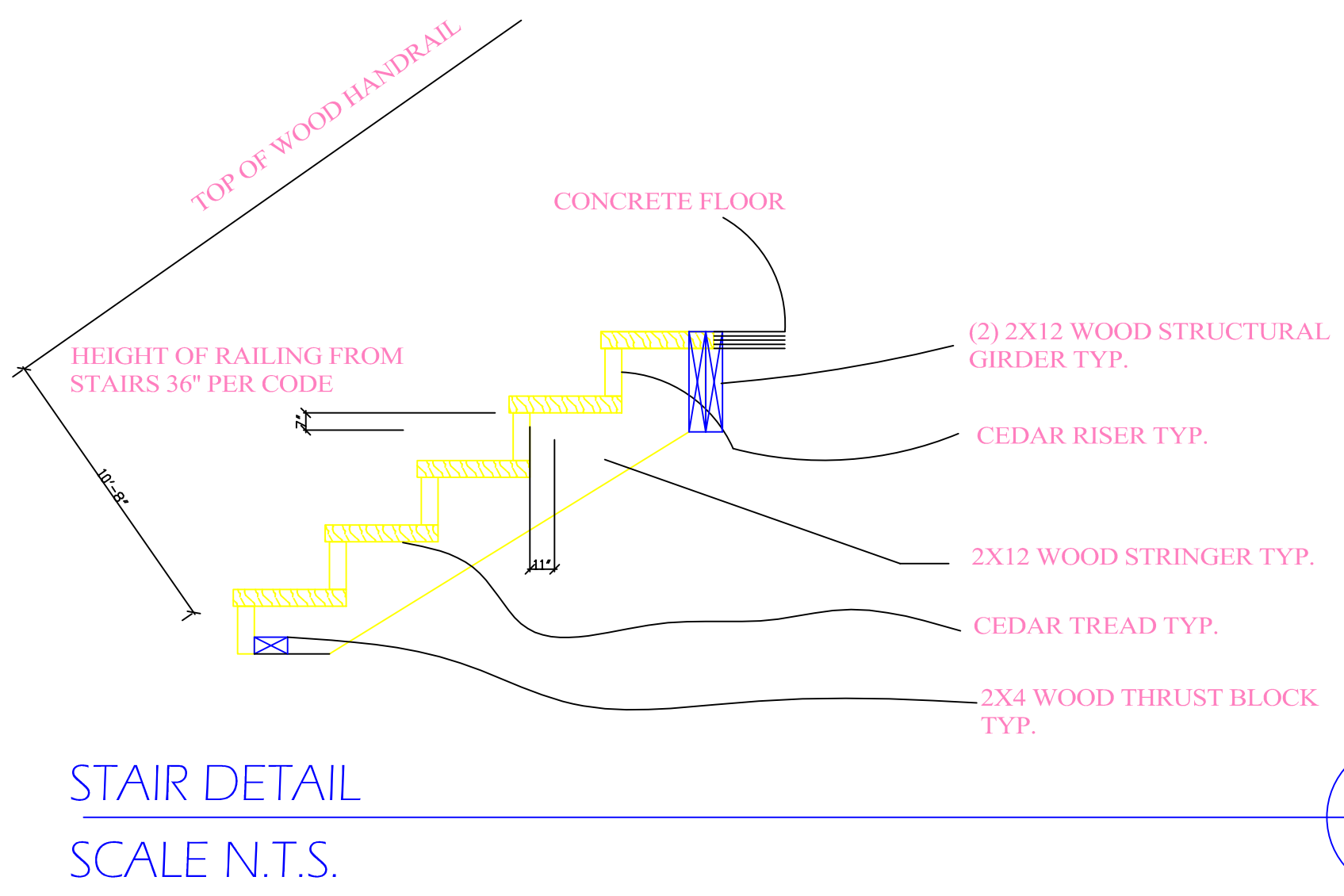
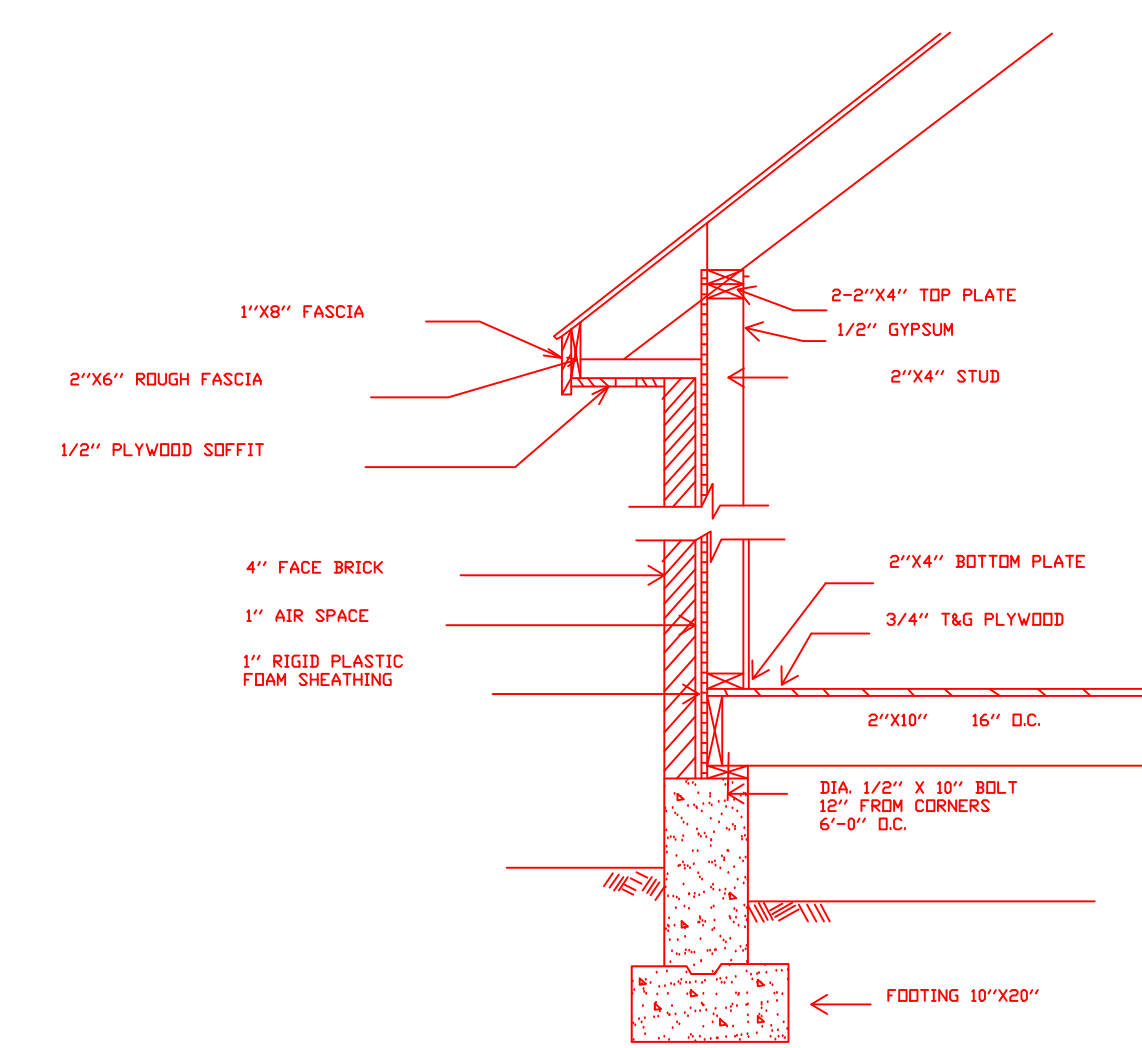
PRODUCED BY AN AUTODESK EDUCATIONAL PRODUCT

PRODUCED BY AN AUTODESK EDUCATIONAL PRODUCT



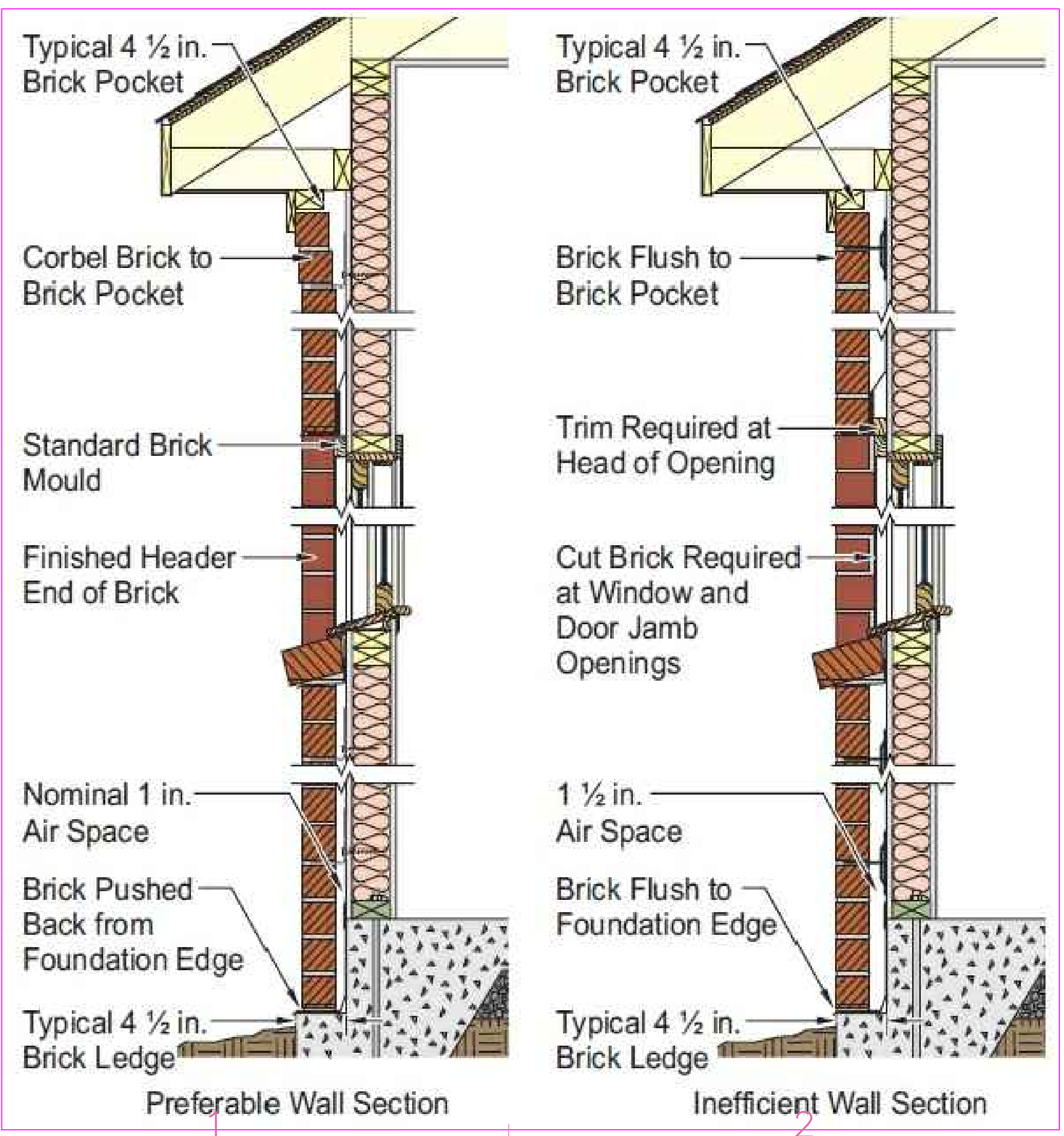
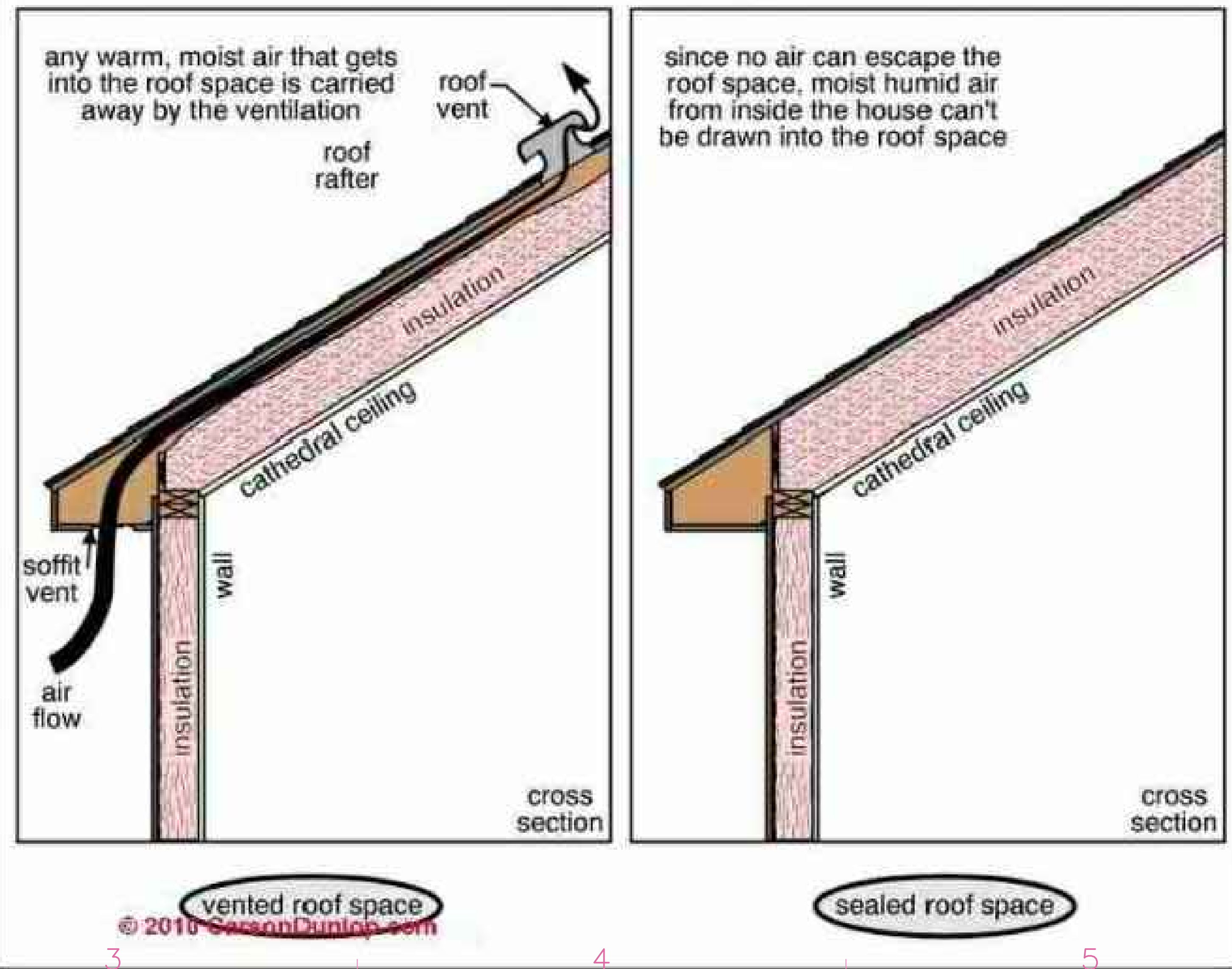


ROOM	FLOOR					BASE	WALLS		AREA
	CARPET	TILE	WOOD	LINOLUM	CONCRETE		WOOD	CONCRETE	
Office #1									185.5
Storage #1									192.5
Game Room									699
Restroom #1									17.8
Middle Room									1267
Eating Room									667.5
Kitchen #1									82.5
Storage #2									128.0
Storage #3									24.97
Storage #4									92.3
Storage #5									345
Office #2									110
Restroom #2									78.8
Custodial Closet									234
Girls Restroom									320
Boys Restroom									307
Storage #6									65
Office #3									184
Office #4									213.4
Lounge									345
Office #5									84
Kitchen #2									154
Study Rom									234
Sudy room									320
Office #6									307
Hallway									583
Boiler									190



A  
A04

### Two different strategies for insulating cathedral/flat roofs



CONSULTANTS  
H:\Con Design\Project 1\psc-logo-rgb\_new.jpg

555 CLAYTON ROAD, CENTRAL ISLIP NY  
OWNER RECREATION CENTER

MARK DATE DESCRIPTION  
PROJECT #2  
PROJECT NO:  
CAD DWG FILE: SOFIA ABEL, KENIA PERALTA, MEGAN PISCIOTTA, AND RABAB ZIA  
DRAWN BY:  
CHK'D BY:  
COPYRIGHT:

EXISTING CONDITION  
SERVICE LEARNING  
PROJECT

A-07  
SHEET INDEX TOTAL SHEETS  
SHEET OF