

Johnson Wax Building

Frank Lloyd Wright

Steven Chiochio



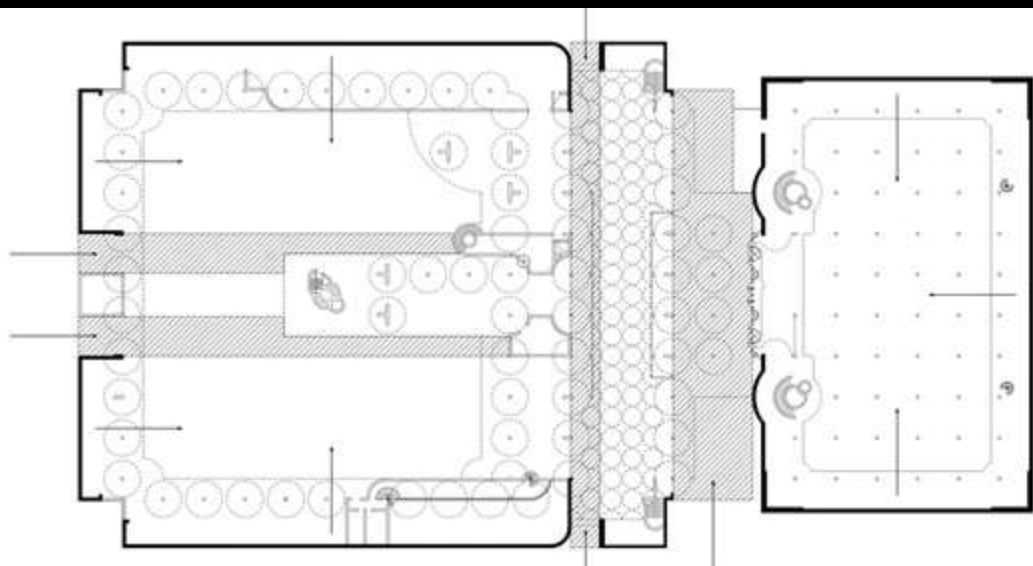
- The Johnson Wax Building in Wisconsin was constructed in 1936.
- The building has a bunch of corporate offices and a research laboratory.
- This building is constructed of precast concrete and brick.



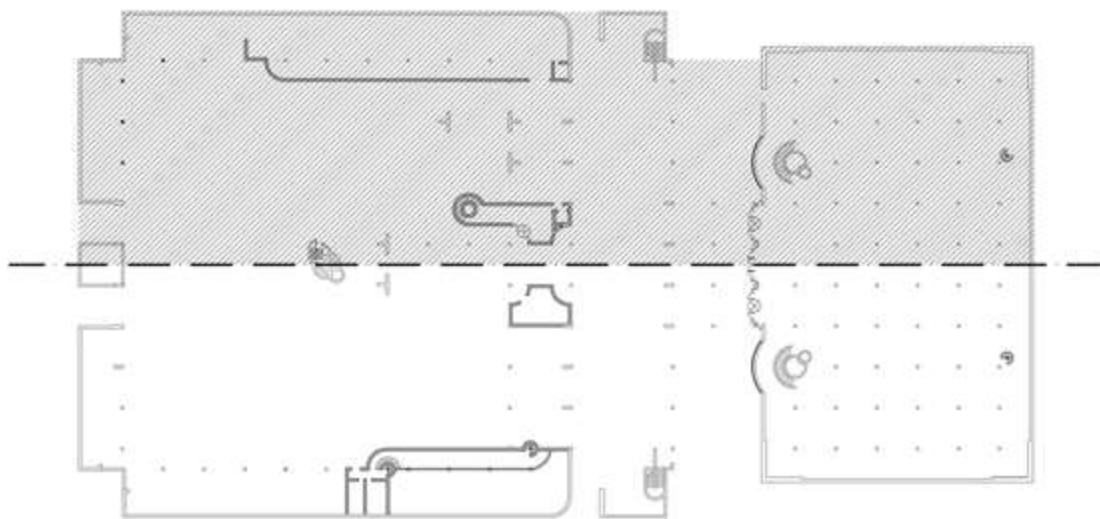


- Light plays a major part in this building. Wright wanted light to be uniformly distributed throughout the building.
- Wright achieved this by making two separate structures, the facades and the forged. He separated these between a break which was covered in glass 43 miles of Pyrex tubes. This created angles of light that well suited the building.
- Artificial lights were placed to help illuminate the building during the night or on a cloudy day.

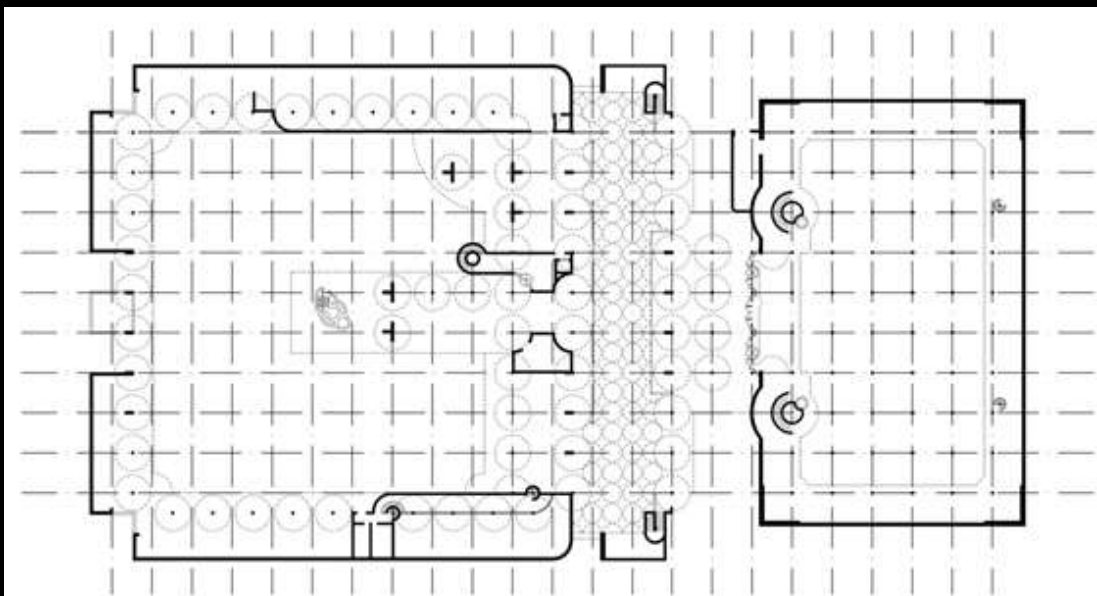




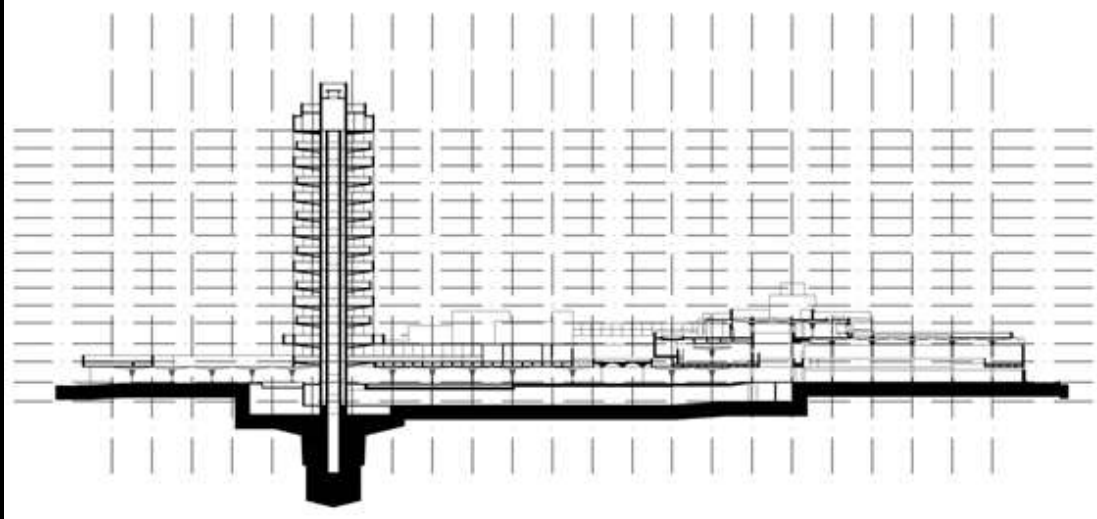
CONTEXT
SCALE 1:500

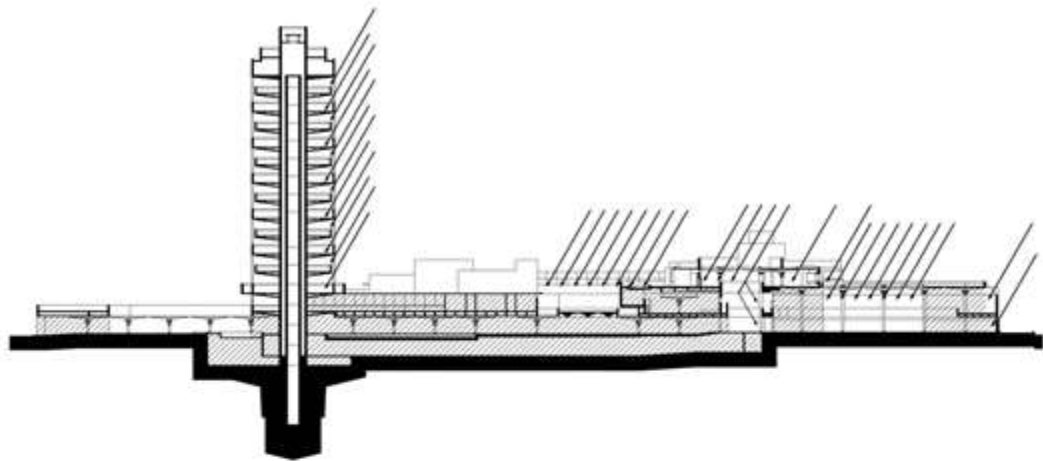


SYMMETRY AND BALANCE

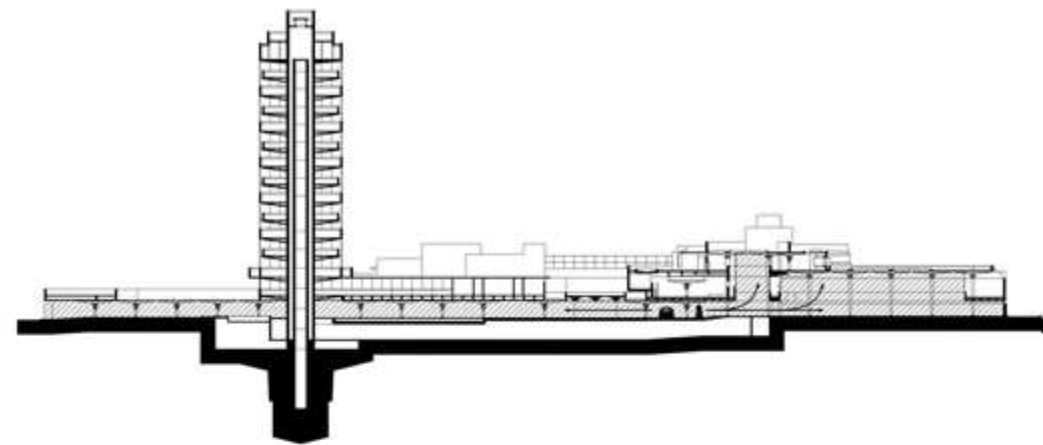


GEOMETRY

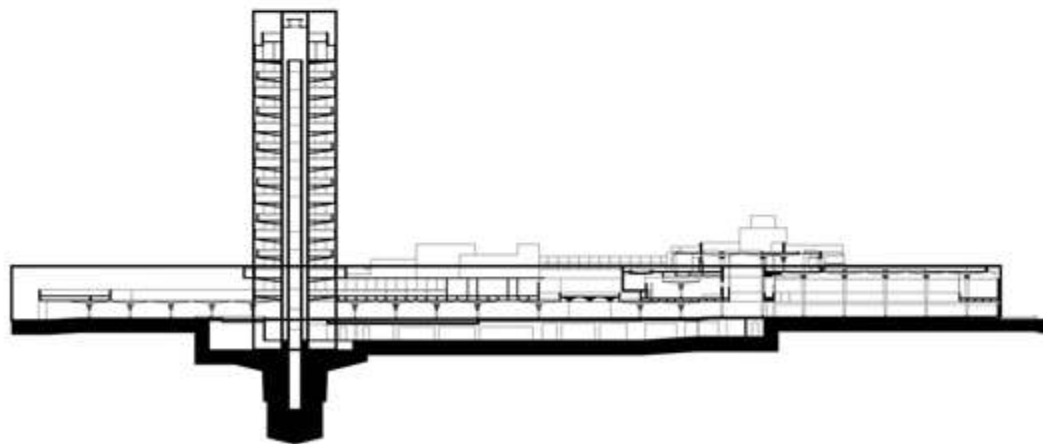




NATURAL LIGHT



SEQUENCE



VERTICAL / HORIZONTAL



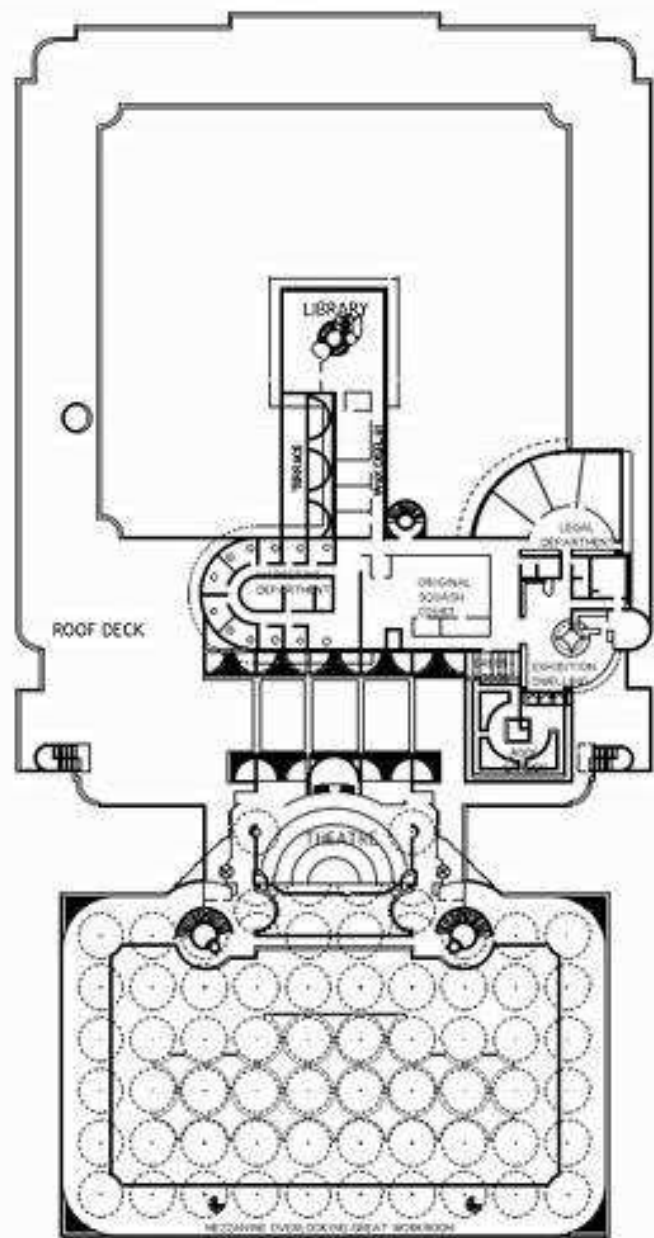
OPACITY / TRANSPARENCE



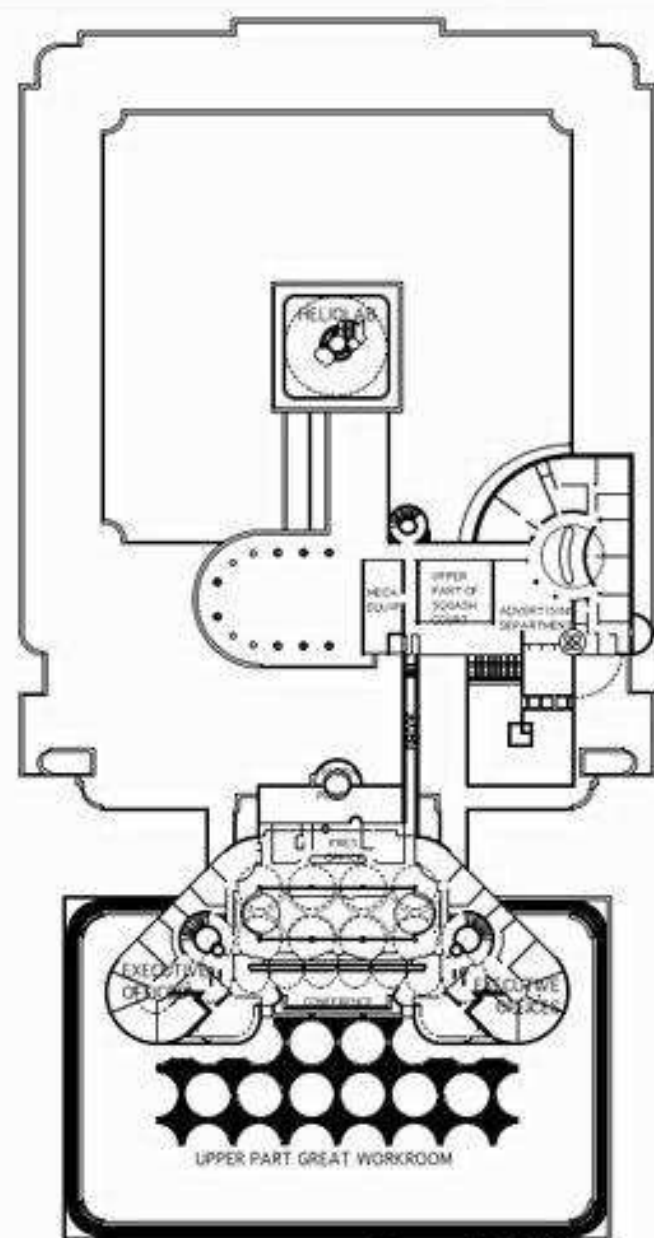
"There in the Johnson Building, you catch no sense of enclosure whatever at any angle, top or sides....Interior space comes free, you are not aware of any boxing in at all. Restricted space simply is not there. Right there where you've always experienced this interior constriction you take a look at the sky!"

—Frank Lloyd Wright

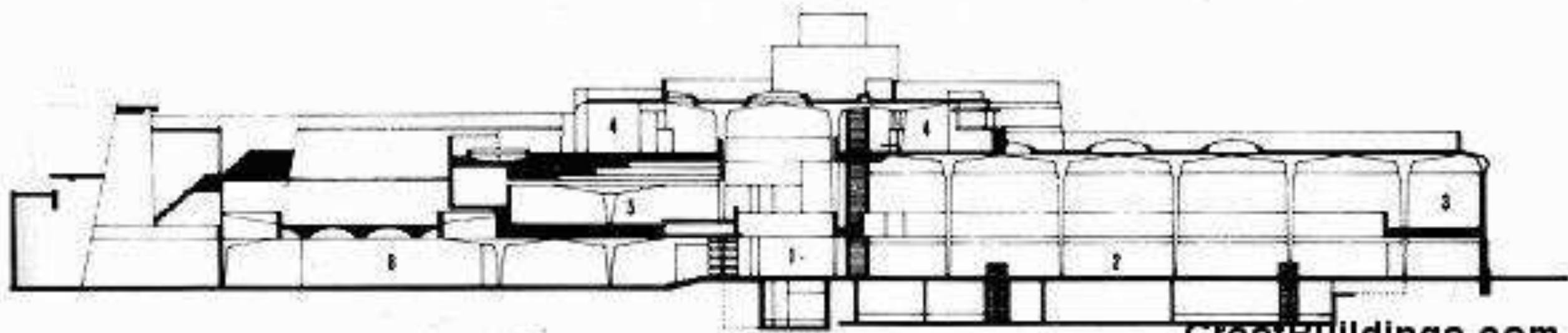




GreatBuildings.com



GreatBuildings.com



GreatBuildings.com



HABS No. W1-284-15









