

**Farmingdale State College**  
State University of New York

CONSULTANTS

US IMPERIAL ADAMS STREET

OWNER  
JOHN SMITH ADAMS STREET

**TABLE R301.2(1) CLIMATIC AND GEOGRAPHIC DESIGN CRITERIA**

GROUND SNOW LOAD <sup>i</sup>	WIND SPEED <sup>d</sup> (mph)	SEISMIC DESIGN CATEGORY <sup>e</sup>	SUBJECT TO DAMAGE FROM			ICE BARRIER UNDERLAYMENT REQUIRED <sup>g</sup>	FLOOD HAZARDS <sup>f</sup>
			Weathering <sup>a</sup>	Frost line depth <sup>b</sup>	Termite <sup>c</sup>		
20	110	B	SEVERE	3 FT	Mod/Heavy	YES	YES

MARK	DATE	DESCRIPTION
PROJECT NO:	1	
CAD DWG FILE:	PROJECT 1.DWG	
DRAWN BY:	STEVEN CHIOCCIO	
CHK'D BY:		
COPYRIGHT:		

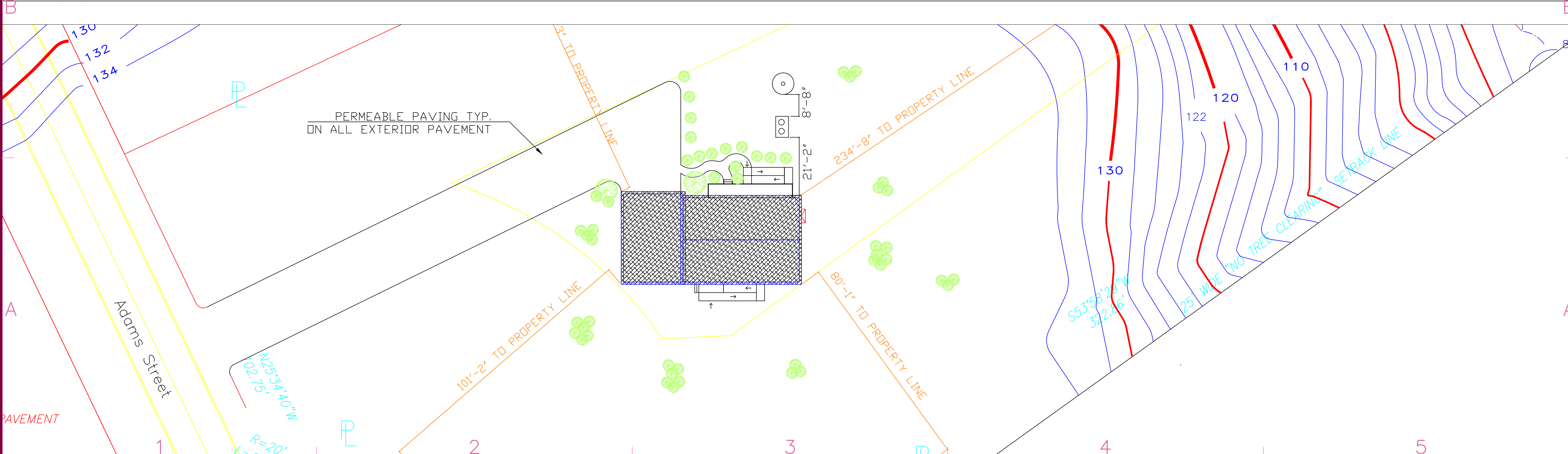
SHEET TITLE  
**CONSTRUCTION DESIGN  
SPRING 2014: PROJECT 1**

A-01

SHEET 1 OF 11

	Ceiling	Skylight	Wall	Window	Door	Basement	Floor	Crawl Wall								
	Component		Assembly			Gross Area		Cavity Insulation R-Value	Continuous Insulation R-Value	U-Factor	UA	Wall Height (ft)	Depth Below Grade (ft)	Depth of Insulation (ft)		
D	<b>Building</b>															
1	East Wall	Wood Frame, 16" o.c.				629	ft2	19.0	6.0	0.043	27					
2	South Wall	Wood Frame, 16" o.c.				921	ft2	19.0	6.0	0.043	40					
3	North Wall	Wood Frame, 16" o.c.				1096	ft2	19.0	6.0	0.043	47					
4	West Wall	Wood Frame, 16" o.c.				617	ft2	19.0	6.0	0.043	16					
5	Window 1	Wood Frame:Triple Pane with Low-E				58	ft2			0.25	15					
6	Window 2	Wood Frame:Triple Pane with Low-E				58	ft2			0.25	15					
7	Window 3	Wood Frame:Triple Pane with Low-E				54	ft2			0.25	14					
8	Door 1	Solid				21	ft2			0.64	13					
9	Door 2	Glass				63	ft2			0.6	38					
10	Floor 1	All-Wood Joist/Truss:Over Unconditioned Space				1272	ft2	30.0	30.0	0.016	20					
11	Floor 2	All-Wood Joist/Truss:Over Unconditioned Space				1260	ft2	30.0	30.0	0.016	20					
12	Basement Wall 1	Solid Concrete or Masonry				319	ft2	30.0	30.0	0.083	26	11.0	9.0	3.0		
13	Basement Wall 2	Solid Concrete or Masonry				319	ft2	30.0	30.0	0.083	26	11.0	9.0	3.0		
14	Basement Wall 3	Solid Concrete or Masonry				451	ft2	30.0	30.0	0.083	37	11.0	9.0	3.0		
15	Basement Wall 4	Solid Concrete or Masonry				451	ft2	30.0	30.0	0.083	37	11.0	9.0	3.0		
16	Ceiling 1	Flat Ceiling or Scissor Truss				1260	ft2	49.0	49.0	0.011	14					

Passes 30.8 % Better Than Code



# Farmingdale State College

State University of New York

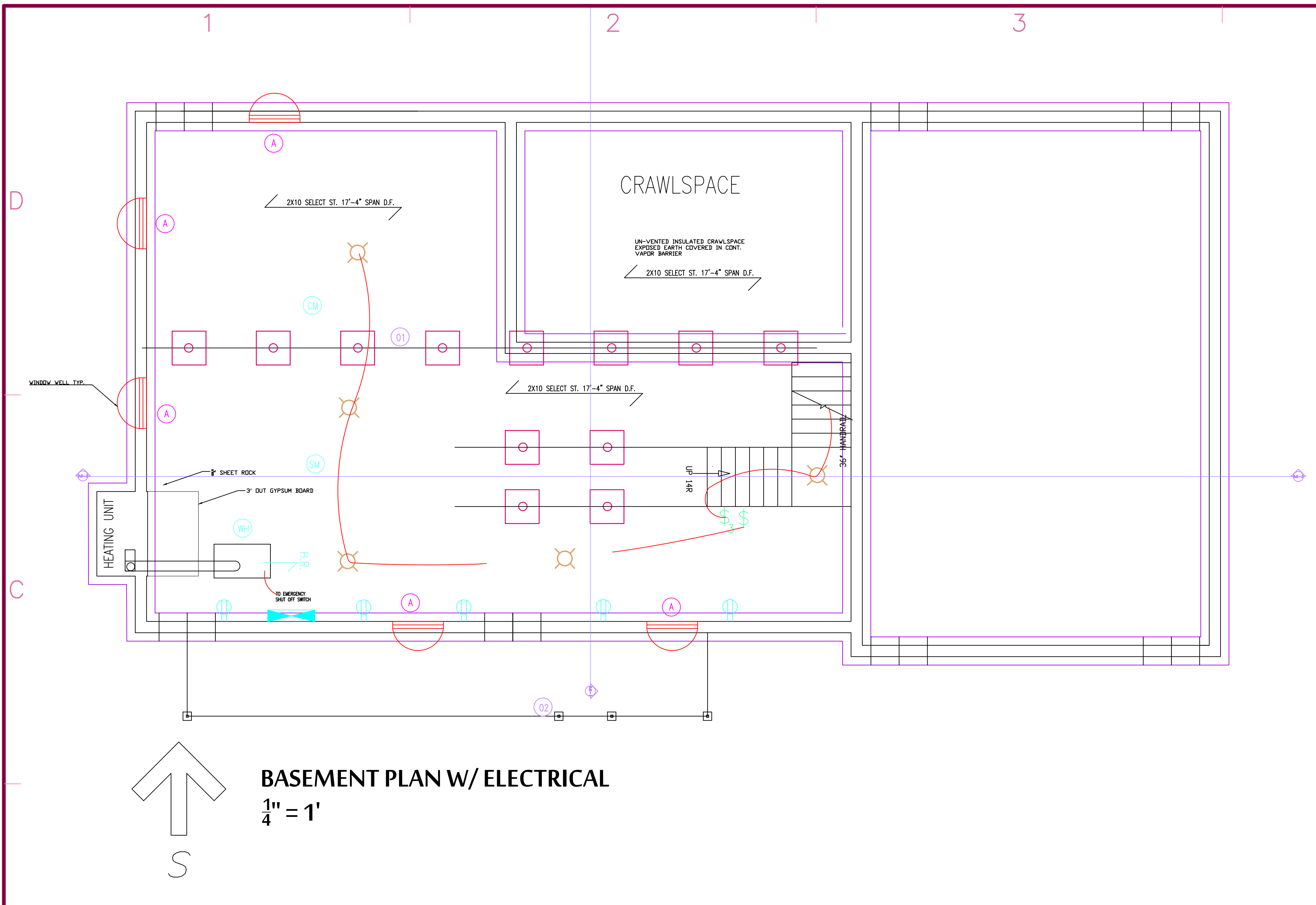
CONSULTANTS

US IMPERIAL  
ADAMS STREET

OWNER  
JOHN SMITH  
ADAMS STREET

MARK	DATE	DESCRIPTION
PROJECT NO:	1	
CAD DWG FILE:	PROJECT 1.DWG	
DRAWN BY:	STEVEN CHIOCCIO	
CHK'D BY:		
COPYRIGHT:		

SHEET TITLE  
**CONSTRUCTION DESIGN  
SPRING 2014: PROJECT 1**



\$	TWO WAY SWITCH
\$ <sub>3</sub>	THREE WAY SWITCH
⊖	DRYER RECEPTACLE
⊖	DUPLEX RECEPTACLE
GFI ⊖	DUPLEX GROUND FAULT RECEPTACLE
→	HOME RUN TO SERVICE PANEL
⊖	SERVICE PANEL
⊙	CEILING MOUNTED FIXTURE
SM	SMOKE DETECTOR
CM	CARBON MONOXIDE DETECTOR
⊖	EMERGENCY BOILER SHUT OFF SWITCH

**Farmingdale State College**  
 State University of New York

CONSULTANTS

OWNER

US IMPERIAL  
 ADAMS STREET

JOHN SMITH  
 ADAMS STREET

BEAM SCHEDULE

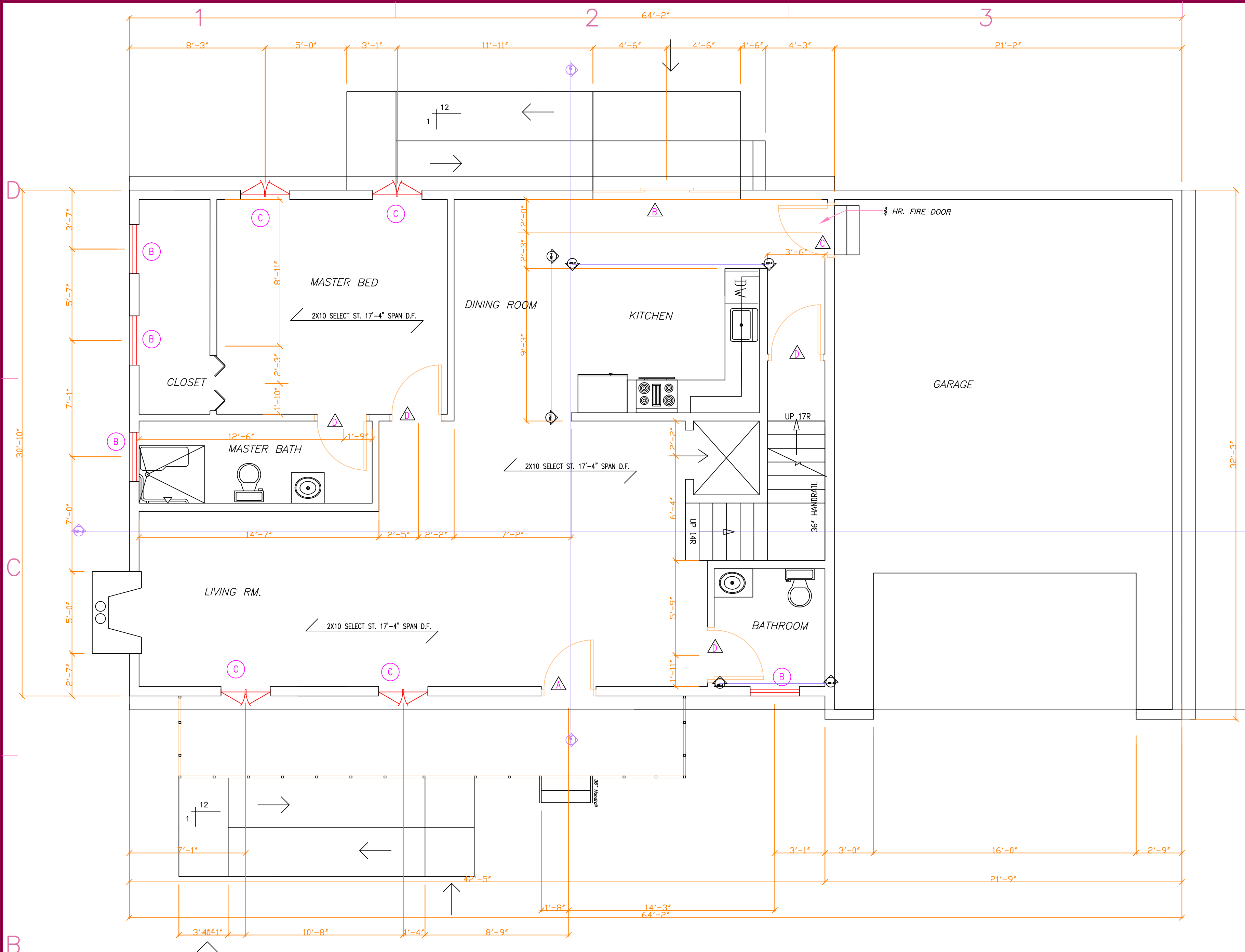
BM 01	2X12	STRUCTURAL GIRDER
BM 02	2X10	STRUCTURAL GIRDER

MARK	DATE	DESCRIPTION
PROJECT NO:	1	
CAD DWG FILE:	PROJECT 1.DWG	
DRAWN BY:	STEVEN CHIOCCIO	
CHK'D BY:		
COPYRIGHT:		

SHEET TITLE  
**CONSTRUCTION DESIGN  
 SPRING 2014: PROJECT 1**

PRODUCED BY AN AUTODESK EDUCATIONAL PRODUCT

PRODUCED BY AN AUTODESK EDUCATIONAL PRODUCT



**First Floor**  
 $\frac{1}{4}'' = 1'$   
 Floor Joists Running Horizontal  
 2x10 SS DF = 17'-4" Span

FIXTURE KEY			
	DOOR		REFRIGERATOR
	WINDOW		RANGE
	BASEMENT WINDOW		KITCHEN SINK
	DRYER		DISHWASHER
	WASHER		ATTIC ACCESS
	HANDICAP SHOWER		HEATING SYSTEM
	TOILET		CLOSET DOOR
	BATHROOM SINK		FIREPLACE

PRODUCED BY AN AUTODESK EDUCATIONAL PRODUCT

PRODUCED BY AN AUTODESK EDUCATIONAL PRODUCT

**Farmingdale State College**  
 State University of New York

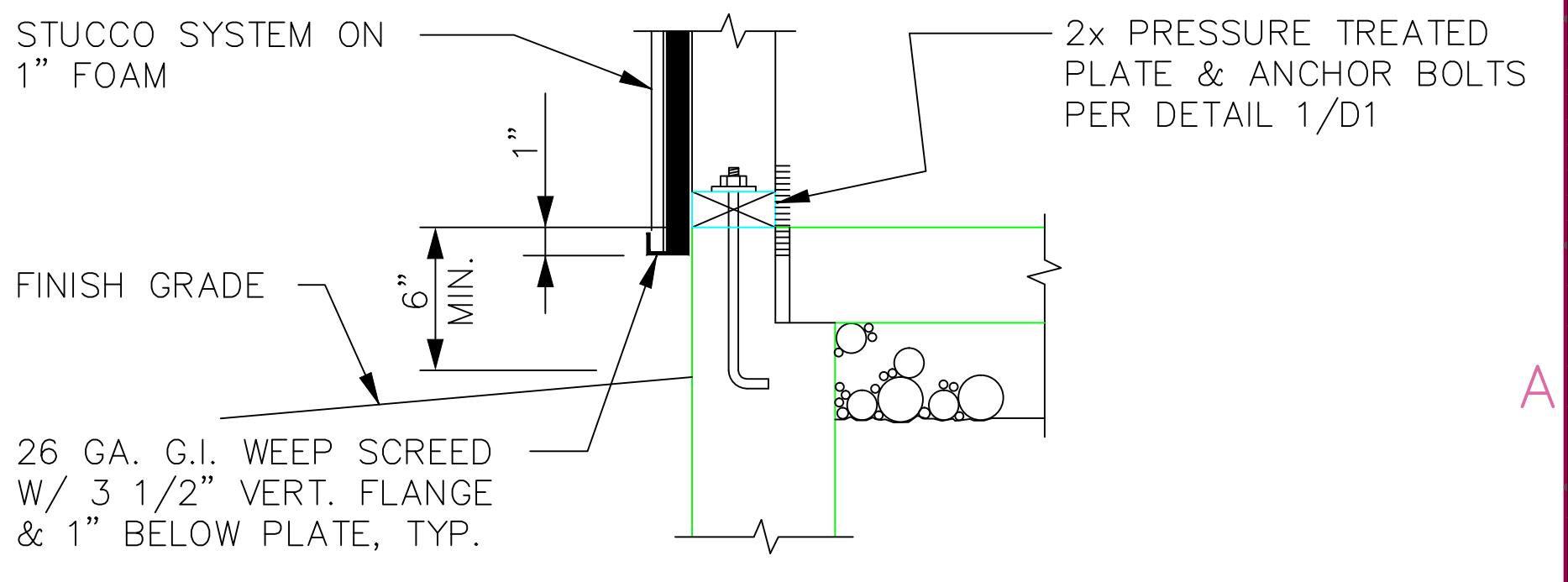
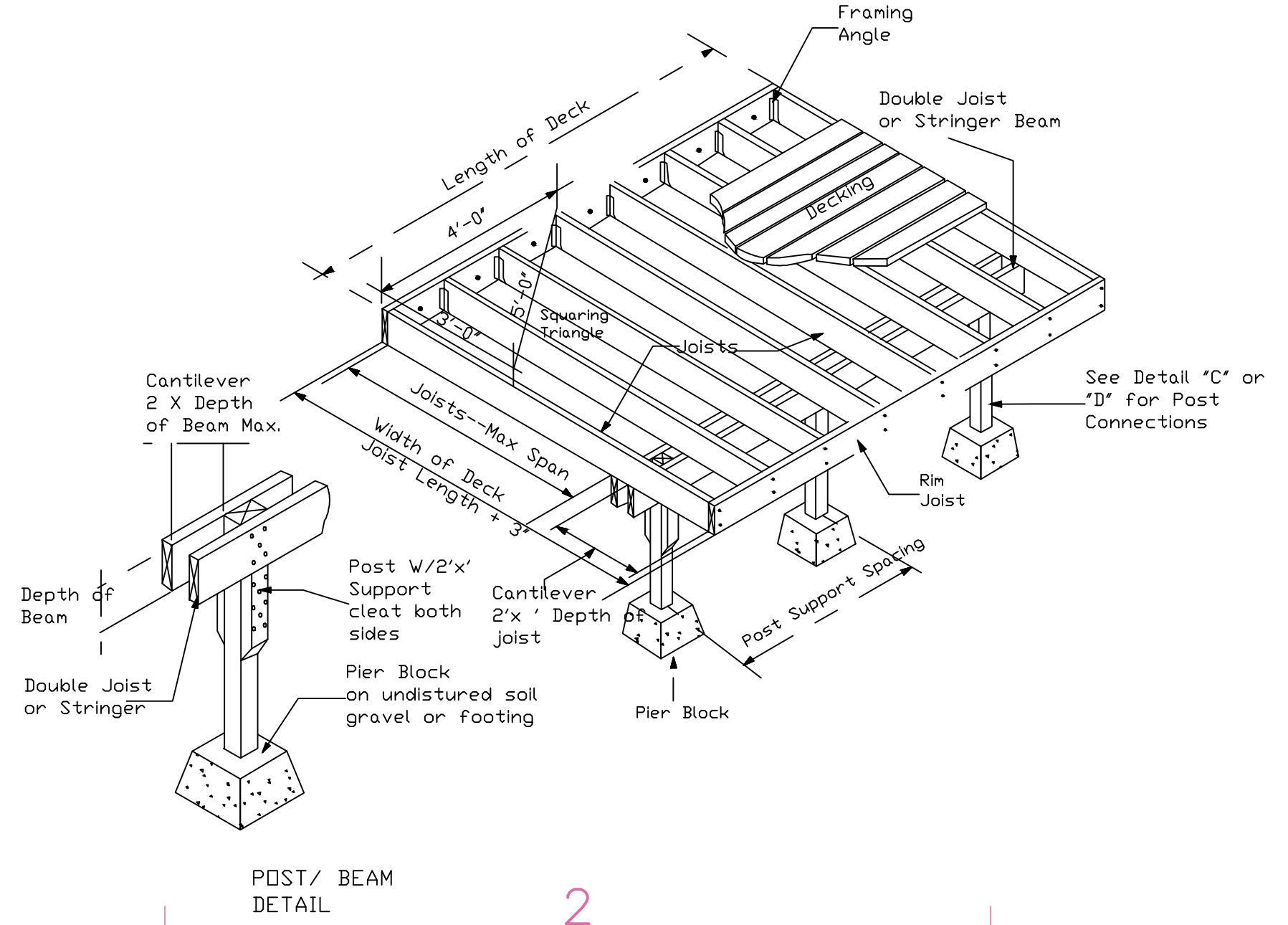
CONSULTANTS

OWNER  
 US IMPERIAL  
 ADAMS STREET  
 JOHN SMITH  
 ADAMS STREET

MARK	DATE	DESCRIPTION

SHEET TITLE  
**CONSTRUCTION DESIGN**  
 SPRING 2014: PROJECT 1

A-04  
 SHEET 4 OF 11



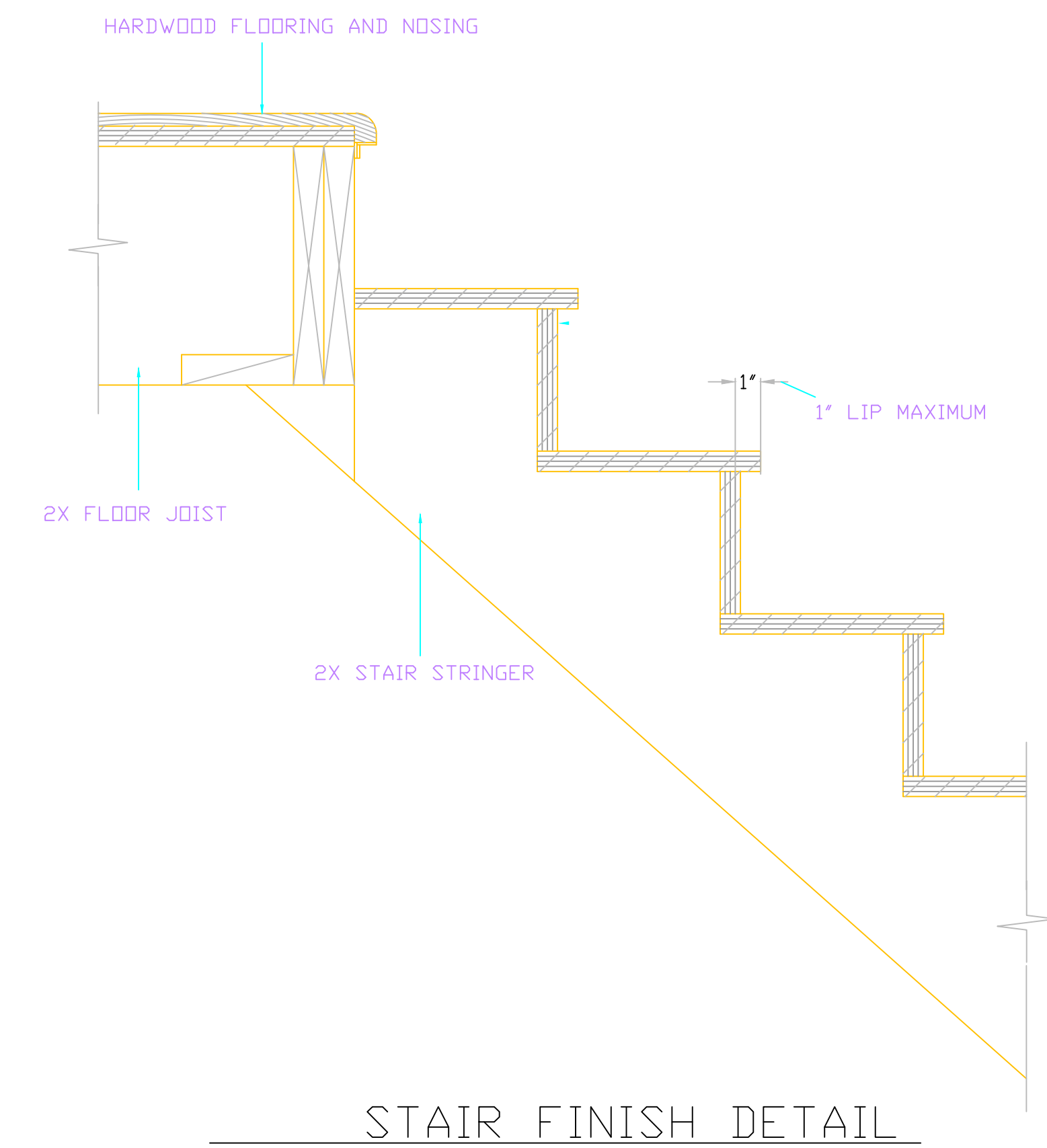
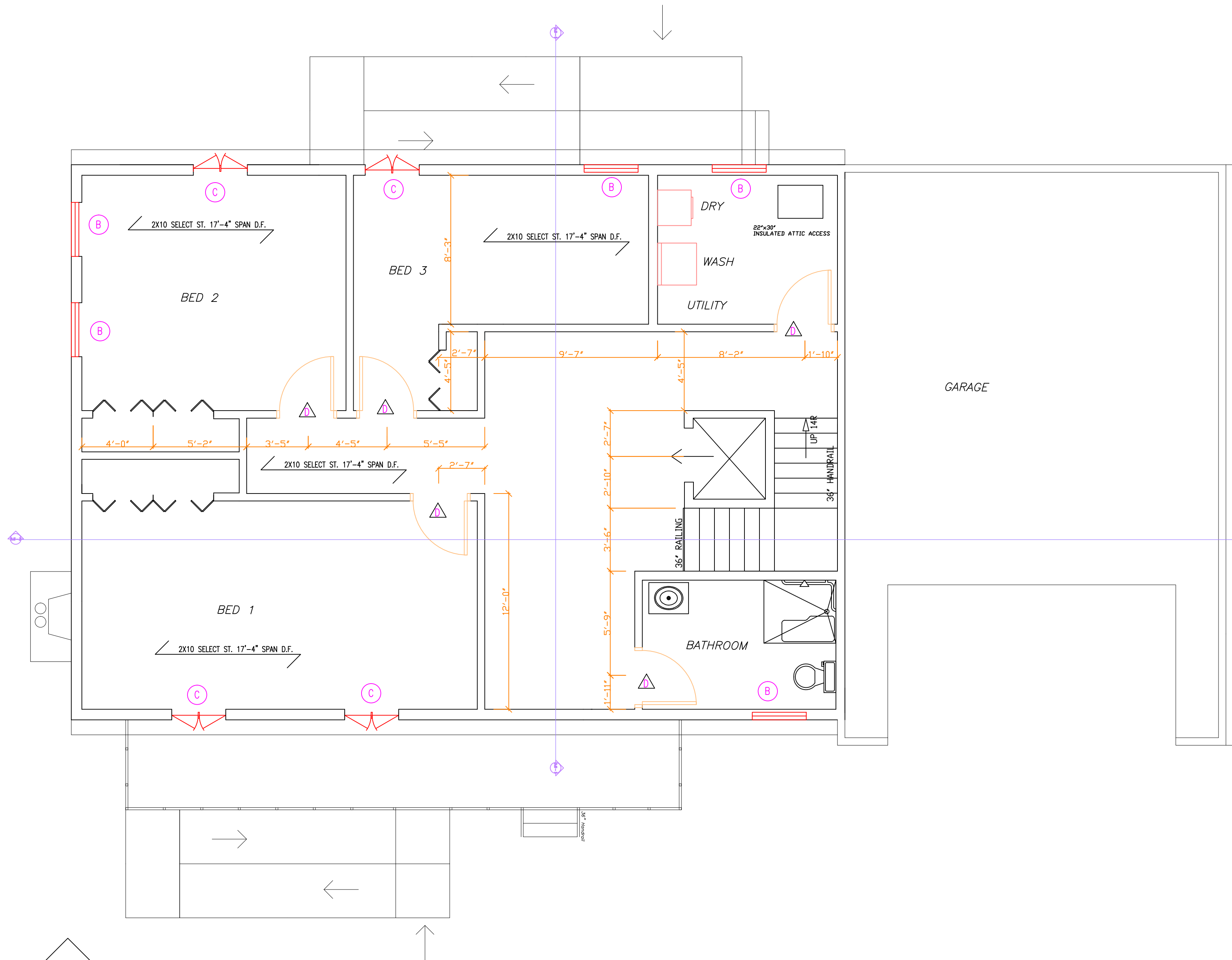
# Farmingdale State College

State University of New York

CONSULTANTS

US IMPERIAL  
ADAMS STREET  
OWNER  
JOHN SMITH  
ADAMS STREET

PRODUCED BY AN AUTODESK EDUCATIONAL PRODUCT



MARK DATE DESCRIPTION

PROJECT NO: 1  
 CAD DWG FILE: PROJECT 1.DWG  
 DRAWN BY: STEVEN CHIOCCIO  
 CHK'D BY:  
 COPYRIGHT:

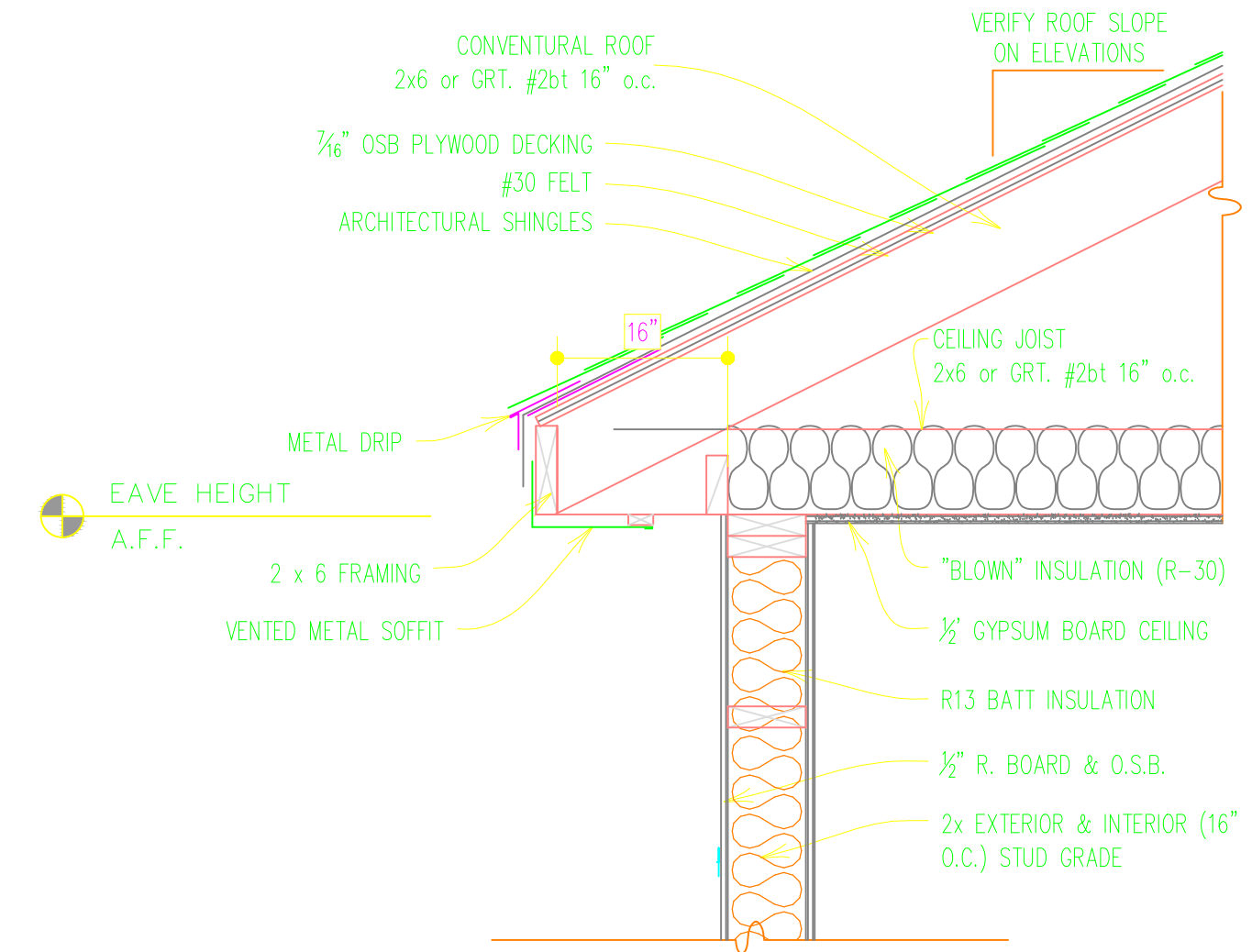
SHEET TITLE  
 CONSTRUCTION DESIGN  
 SPRING 2014: PROJECT 1

A-05  
 SHEET 5 OF 11

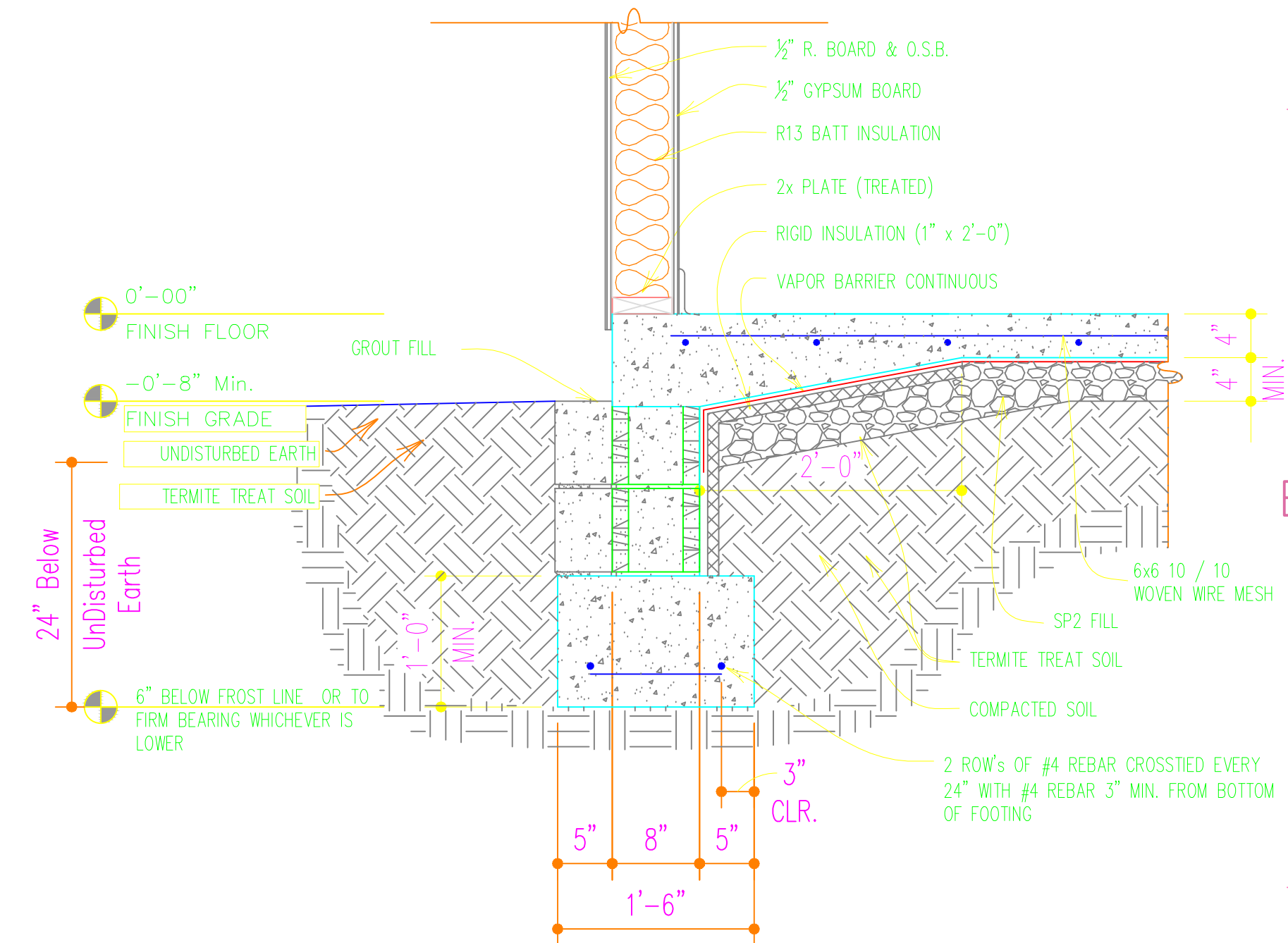
CONSULTANTS

US IMPERIAL  
ADAMS STREET  
OWNER  
JOHN SMITH  
ADAMS STREET

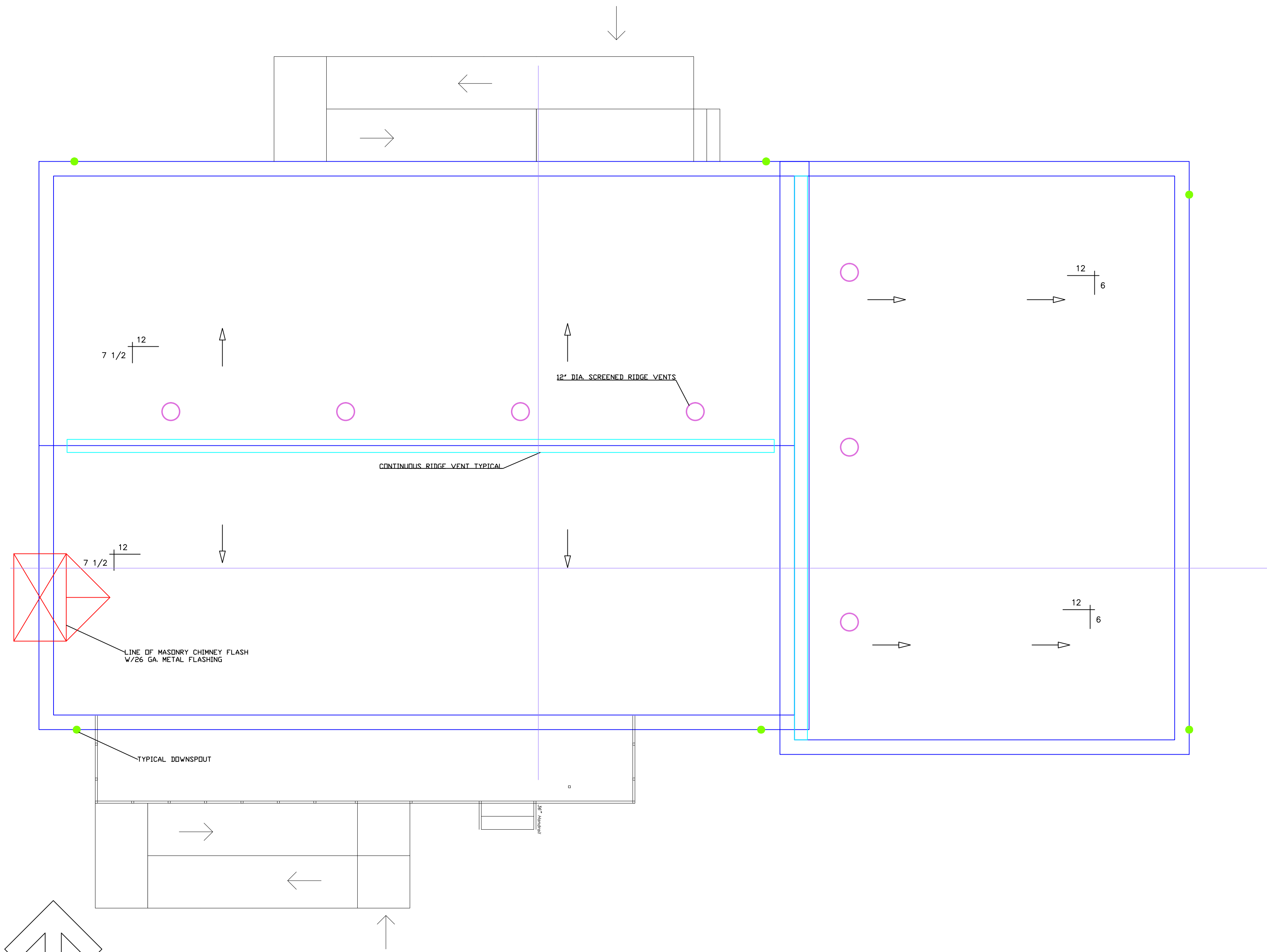
PRODUCED BY AN AUTODESK EDUCATIONAL PRODUCT



Typ. Wall Section  
NOT TO SCALE



Footing Section - 18"  
NOT TO SCALE



ROOF PLAN  
1/4" = 1'

MARK DATE DESCRIPTION

PROJECT NO: 1  
CAD DWG FILE: PROJECT 1.DWG  
DRAWN BY: STEVEN CHIOCCIO  
CHK'D BY:  
COPYRIGHT:

SHEET TITLE  
CONSTRUCTION DESIGN  
SPRING 2014: PROJECT 1

A-06  
SHEET 6 OF 11

# Farmingdale State College

State University of New York

CONSULTANTS

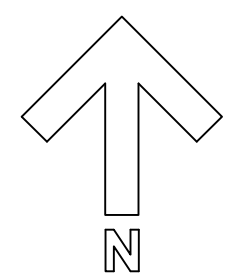
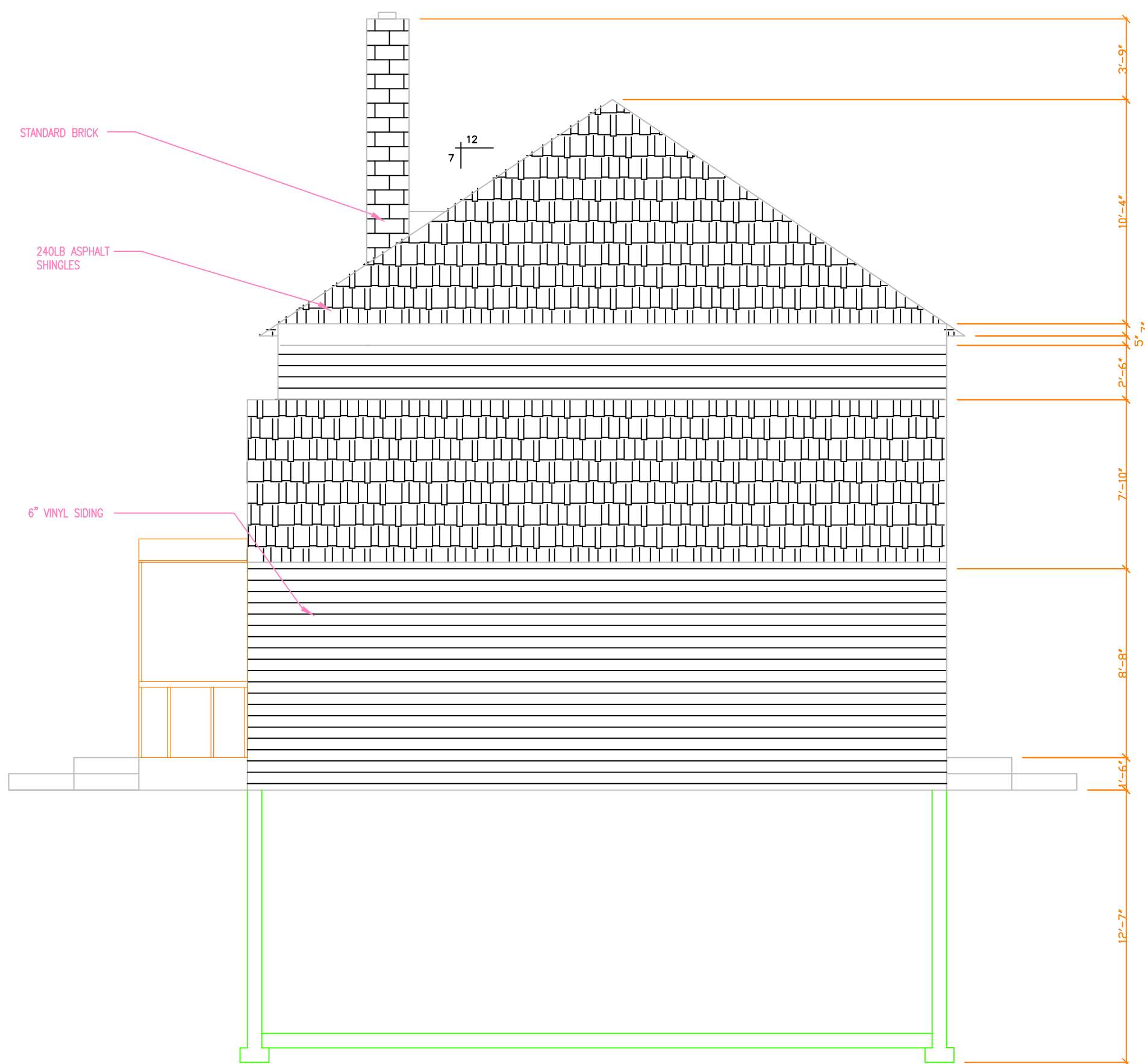
US IMPERIAL  
ADAMS STREET  
  
JOHN SMITH  
ADAMS STREET

OWNER

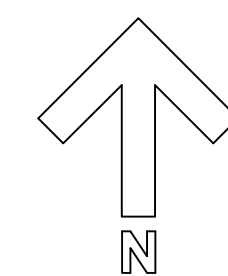
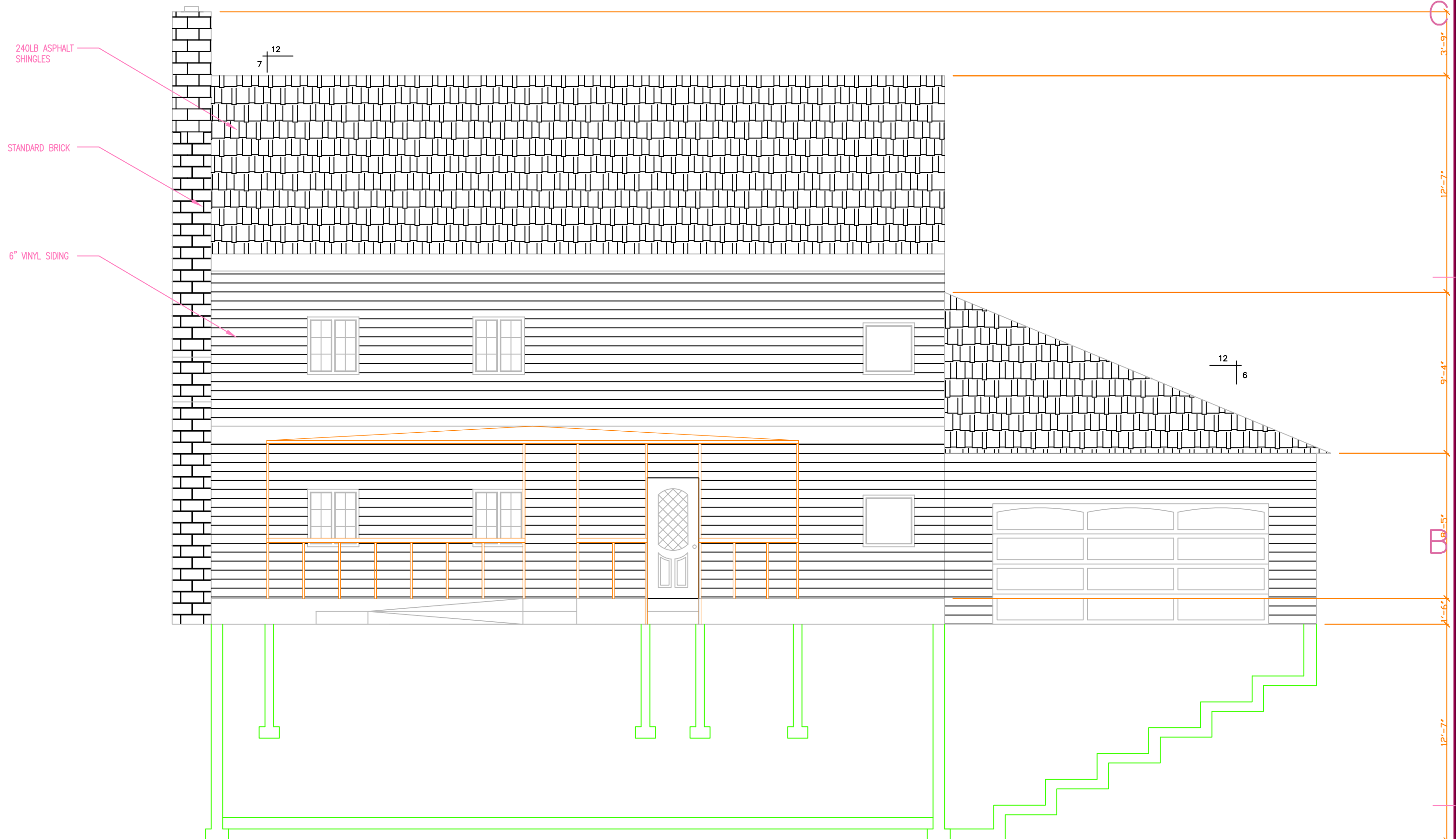
MARK	DATE	DESCRIPTION
PROJECT NO:	1	
CAD DWG FILE:	PROJECT 1.DWG	
DRAWN BY:	STEVEN CHIOCCIO	
CHK'D BY:		
COPYRIGHT:		

SHEET TITLE  
**CONSTRUCTION DESIGN  
SPRING 2014: PROJECT 1**

A-07  
SHEET 7 OF 11



East Side Elevation  
3/16" = 1'



South Side Elevation  
3/16" = 1'

PRODUCED BY AN AUTODESK EDUCATIONAL PRODUCT

PRODUCED BY AN AUTODESK EDUCATIONAL PRODUCT

PRODUCED BY AN AUTODESK EDUCATIONAL PRODUCT

PRODUCED BY AN AUTODESK EDUCATIONAL PRODUCT

# Farmingdale State College

State University of New York

CONSULTANTS

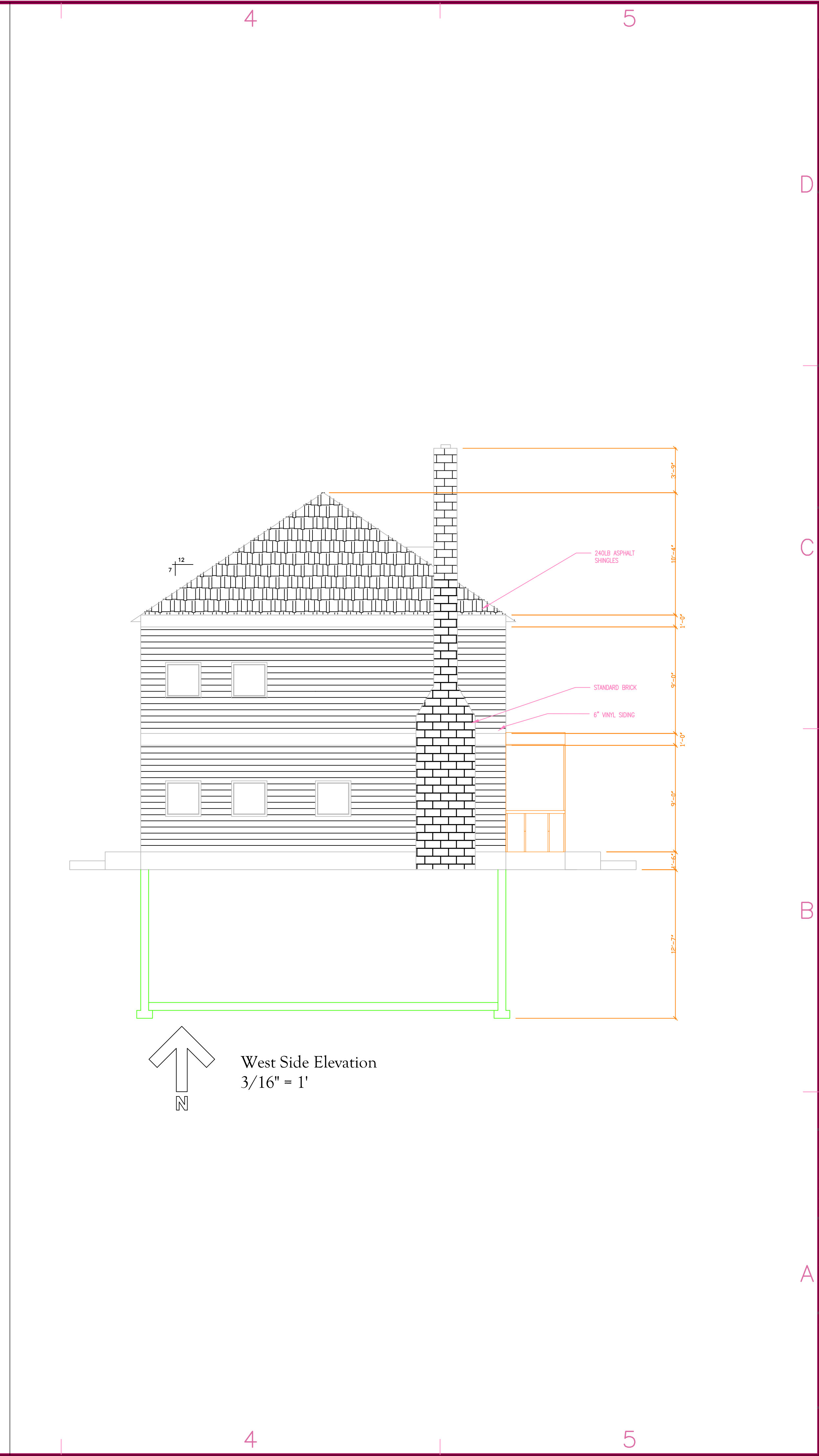
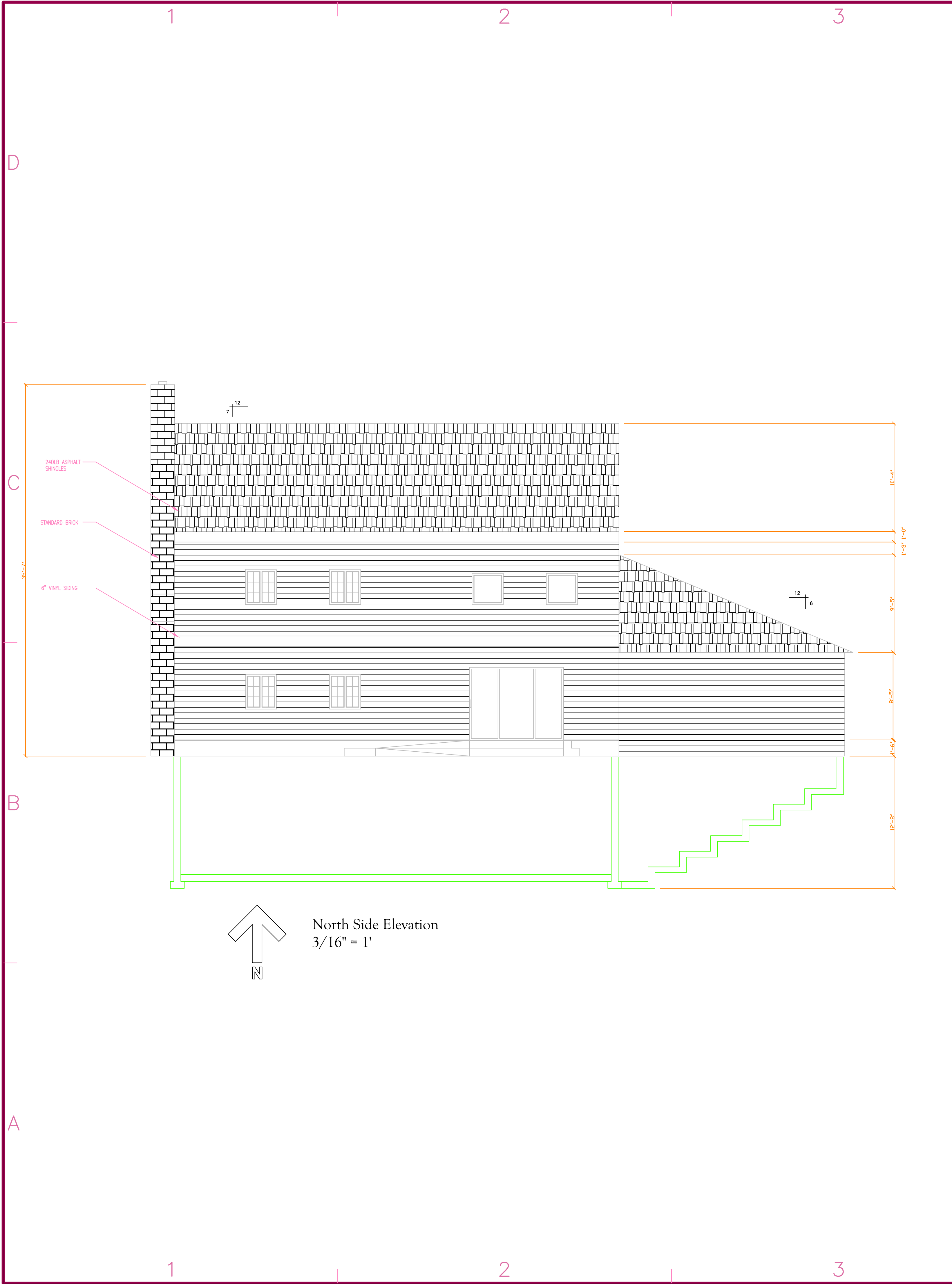
US IMPERIAL  
ADAMS STREET  
OWNER  
JOHN SMITH  
ADAMS STREET

MARK	DATE	DESCRIPTION
PROJECT NO:	1	
CAD DWG FILE:	PROJECT 1.DWG	
DRAWN BY:	STEVEN CHIOCCIO	
CHK'D BY:		
COPYRIGHT:		

CONSTRUCTION DESIGN  
SPRING 2014: PROJECT 1

A-08

SHEET 8 OF 11





# INTERIOR FINISH SCHEDULE

ROOM	FLOOR					BASE			WALLS		CEILING	
	CARPET	TILE	WOOD	LINOLIUM	CONCRETE	WOOD	VINYL TOPSET	CONCRETE	5" GYPSUM	TYPE X GYPSUM	CEILING HEIGHT	5" GYPSUM
LIVING ROOM			●			●			●		8'-0"	●
BATHROOM		●				●			●		8'-0"	●
KITCHEN		●				●			●		8'-0"	●
DINING ROOM			●			●			●		8'-0"	●
MASTER BED			●			●			●		8'-0"	●
MASTER BATH		●				●			●		8'-0"	●
GARAGE					●			●		●	9'-0"	●
STAIRS			●			●			●		8'-0"	●
BATH 2		●				●			●		8'-0"	●
UTILITY		●				●			●		8'-0"	●
BED 1	●					●			●		8'-0"	●
BED 2	●					●			●		8'-0"	●
BED 3	●					●			●		8'-0"	●

**Farmingdale State College**  
State University of New York

CONSULTANTS

OWNER

US IMPERIAL  
ADAMS STREET

JOHN SMITH  
ADAMS STREET

OWNER

US IMPERIAL  
ADAMS STREET

JOHN SMITH  
ADAMS STREET

OWNER

US IMPERIAL  
ADAMS STREET

JOHN SMITH  
ADAMS STREET

OWNER

US IMPERIAL  
ADAMS STREET

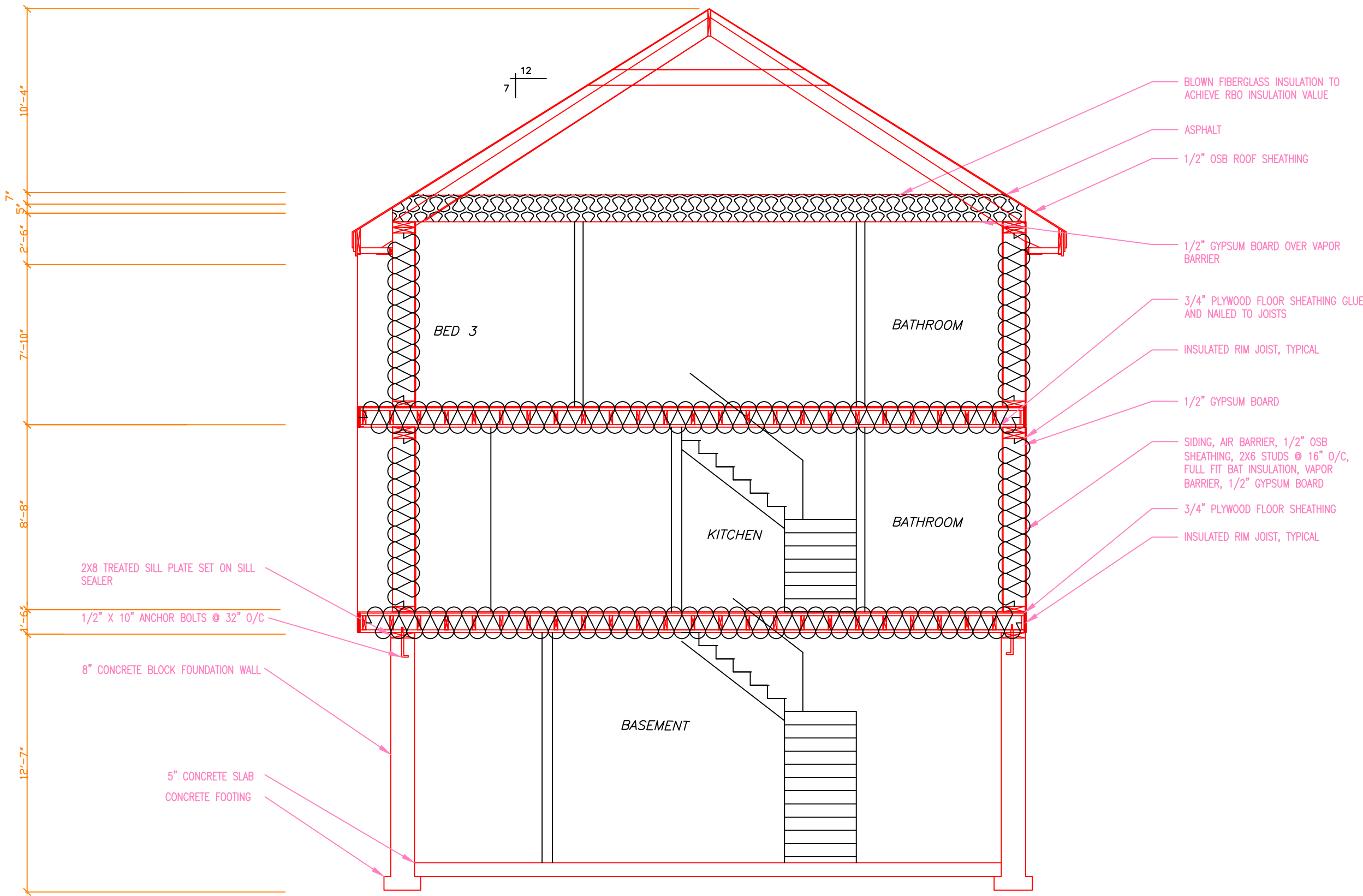
JOHN SMITH  
ADAMS STREET

OWNER

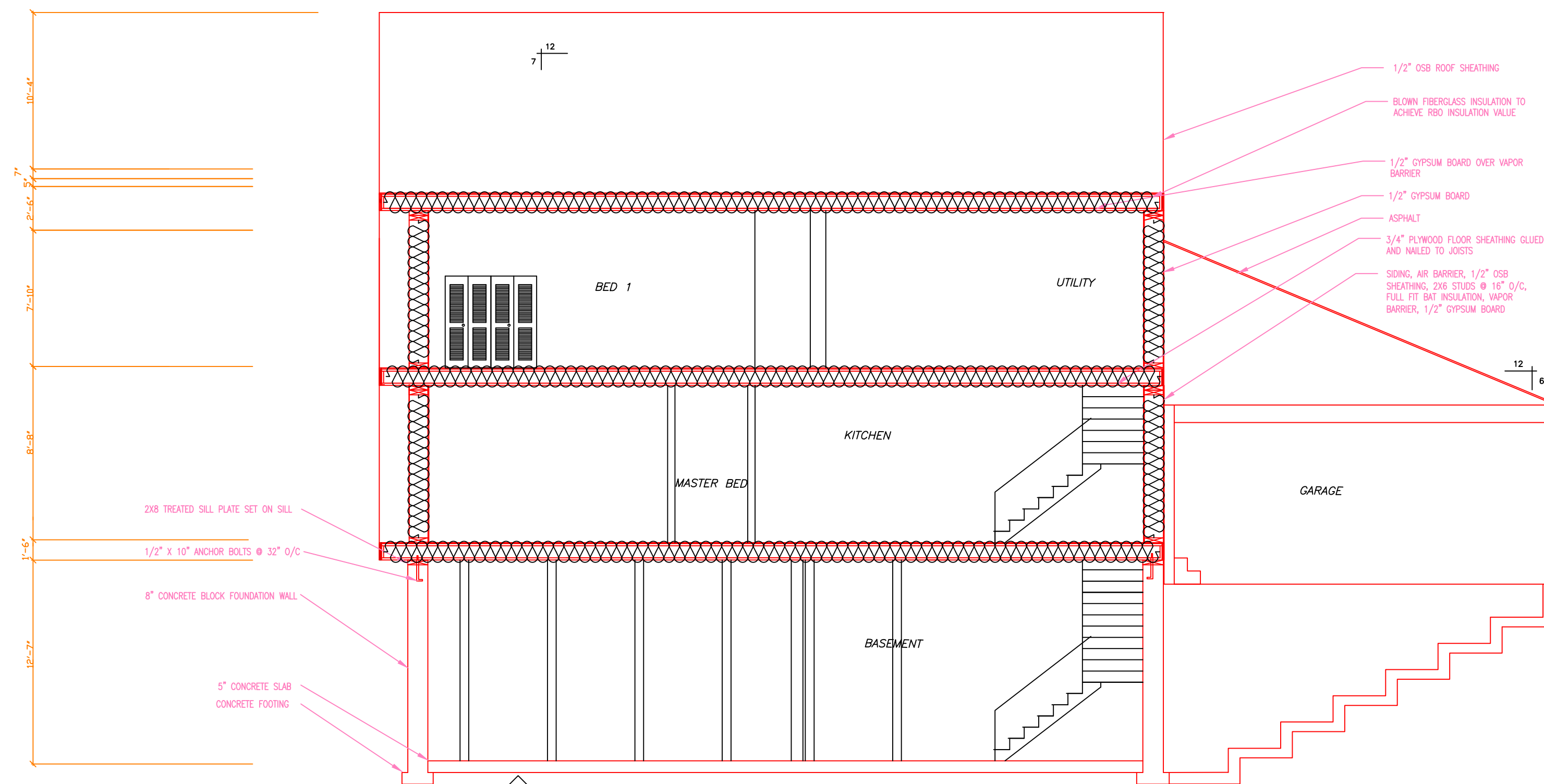
US IMPERIAL  
ADAMS STREET

# DOOR SCHEDULE

LETTER	SIZE		TYPE	FRAME	Remarks
	Width	Height			
A	3'	7'	EXTERIOR	WOOD	1/4" TEMPERED GLASS
B	9'	7'	EXTERIOR	GLASS	REINFORCED EXTERIOR 1/4" GLASS
C	3'	7'	EXTERIOR	STEEL/WOOD	3/4 HOUR FIRE RATED GARAGE DOOR. (STEEL SHELL W/ WOOD CORE AND SELF CLOSING HINDGE)
D	3'	7'	INTERIOR	WOOD	INTERIOR SOLID WOOD DOOR



SECTION 1  
3/16" = 1'

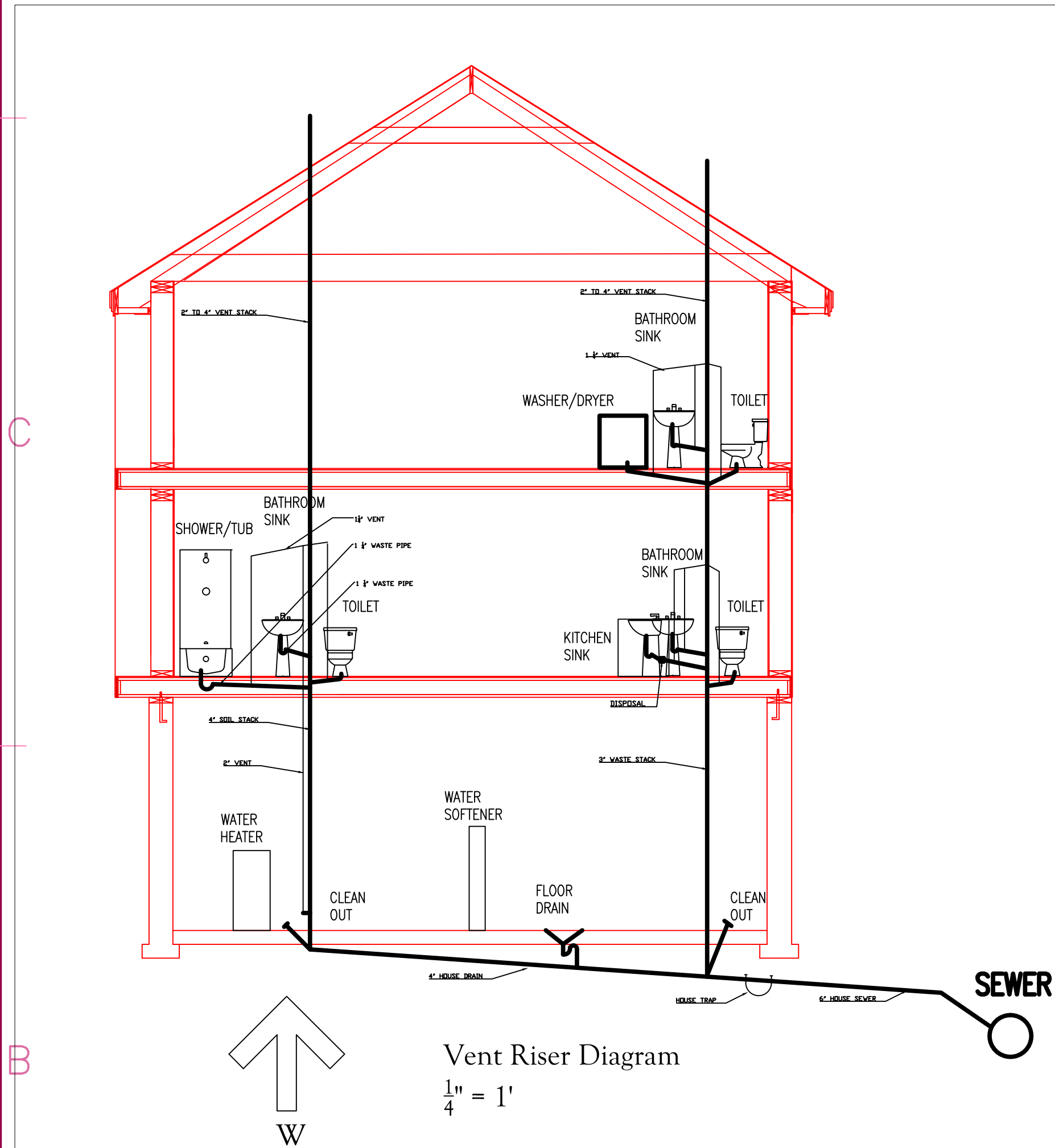


SECTION 2  
3/16" = 1'

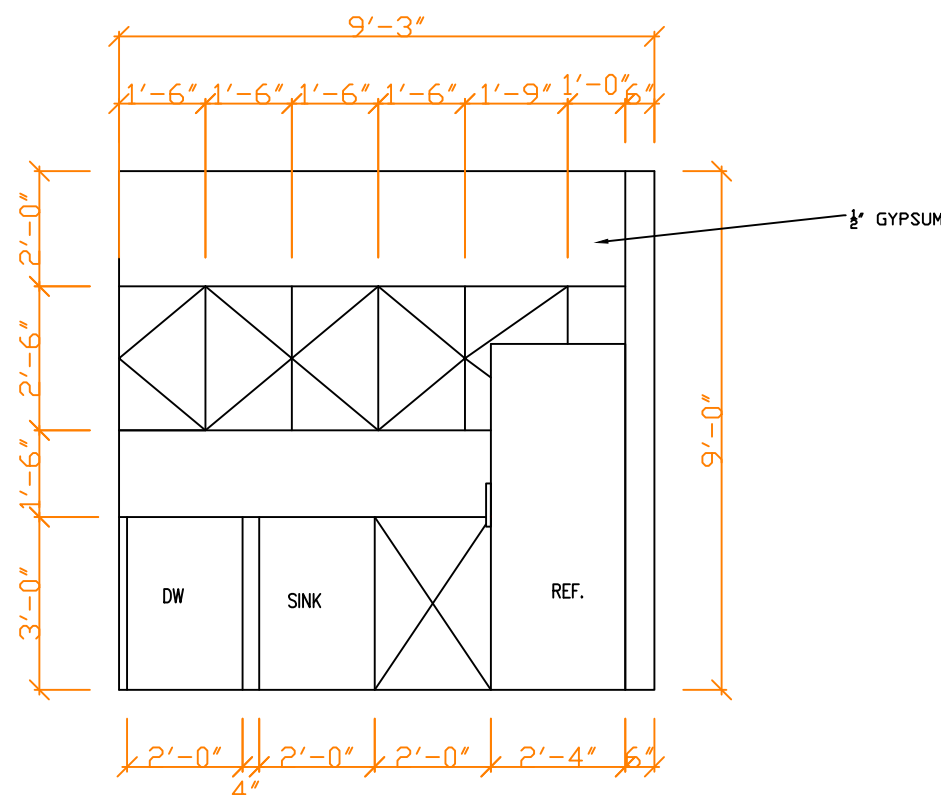
CONSULTANTS

US IMPERIAL  
ADAMS STREET  
OWNER  
JOHN SMITH  
ADAMS STREET

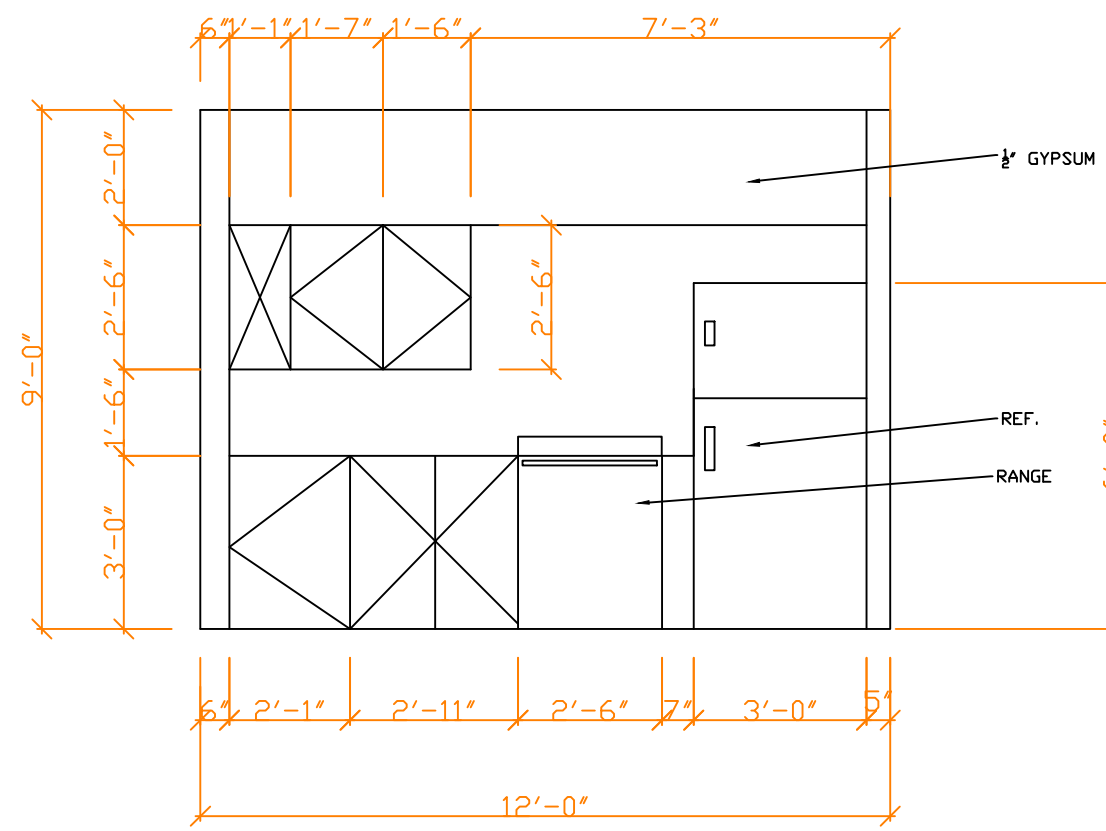
PRODUCED BY AN AUTODESK EDUCATIONAL PRODUCT



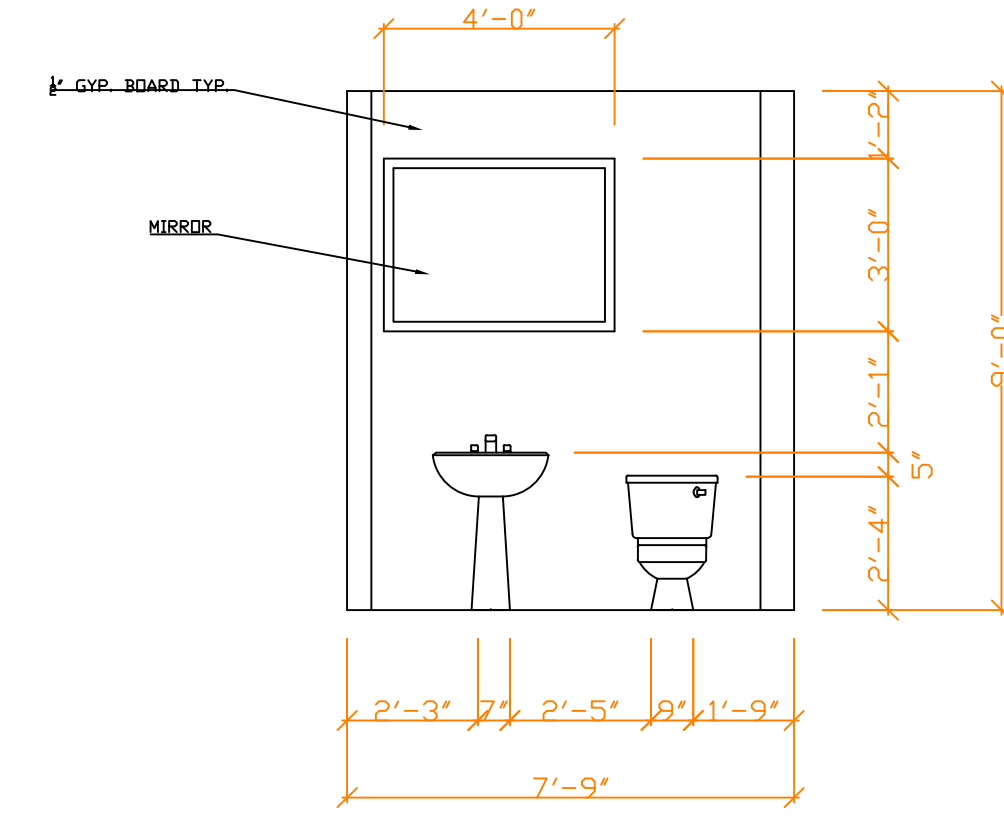
Vent Riser Diagram  
1/4" = 1'



**SECTION A10-1**  
1/4" = 1'



**SECTION A10-2**  
1/4" = 1'



**SECTION A10-3**  
1/4" = 1'

## WINDOW SCHEDULE

LETTER	SIZE		TYPE	FRAME	Remarks
	Width	Height			
(A)	3'	2'	SPECIALTY	WOOD	(C16) ANDERSON 400 SERIES E4 GLAZE
(B)	3'	3'	DOUBLE HUNG	WOOD	(WDH 3041C) ANDERSON 400 SERIES LOW E4 GLAZE
(C)	3'	3'-4"	CASEMENT	WOOD	(P3560) ANDERSON 400 SERIES LOW E4 GLAZE

MARK	DATE	DESCRIPTION

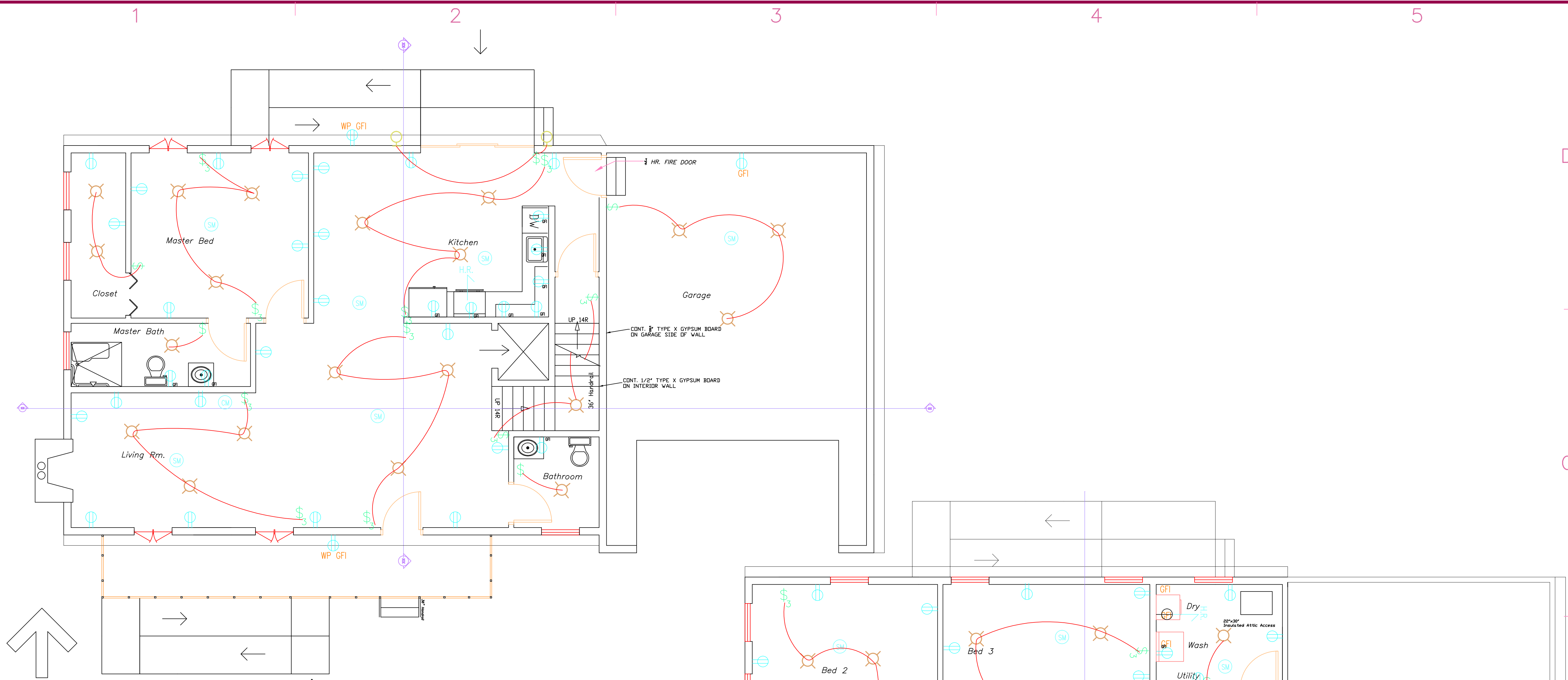
PROJECT NO: 1  
CAD DWG FILE: PROJECT 1.DWG  
DRAWN BY: STEVEN CHIOCCIO  
CHK'D BY:  
COPYRIGHT:

SHEET TITLE  
CONSTRUCTION DESIGN  
SPRING 2014: PROJECT 1

CONSULTANTS

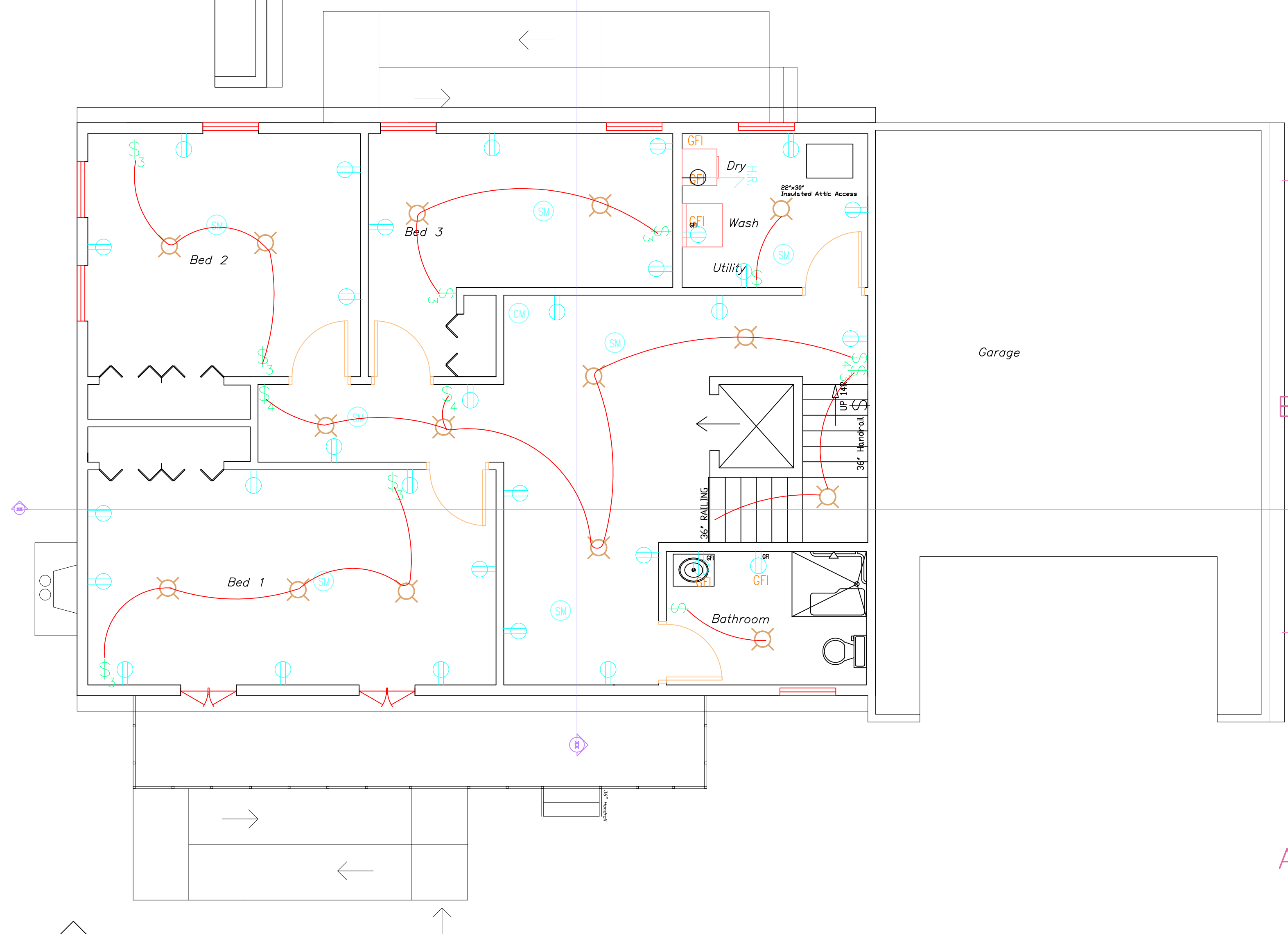
OWNER  
US IMPERIAL  
ADAMS STREET  
JOHN SMITH  
ADAMS STREET

PRODUCED BY AN AUTODESK EDUCATIONAL PRODUCT



**First Floor Electrical Plan**  
1/4" = 1'

\$	TWO WAY SWITCH
\$3	THREE WAY SWITCH
⊖	DRYER RECEPTACLE
⊕	DUPLEX RECEPTACLE
GFI ⊕	DUPLEX GROUND FAULT RECEPTACLE
→	HOME RUN TO SERVICE PANEL
⊠	SERVICE PANEL
⊙	CEILING MOUNTED FIXTURE
SM	SMOKE DETECTOR
CM	CARBON MONOXIDE DETECTOR
⊘	EMERGENCY BOILER SHUT OFF SWITCH



**Second Floor Electrical Plan**  
1/4" = 1'

MARK	DATE	DESCRIPTION
PROJECT NO:	1	
CAD DWG FILE:	PROJECT 1.DWG	
DRAWN BY:	STEVEN CHIOCCIO	
CHK'D BY:		
COPYRIGHT:		

SHEET TITLE  
**CONSTRUCTION DESIGN**  
SPRING 2014: PROJECT 1

PRODUCED BY AN AUTODESK EDUCATIONAL PRODUCT